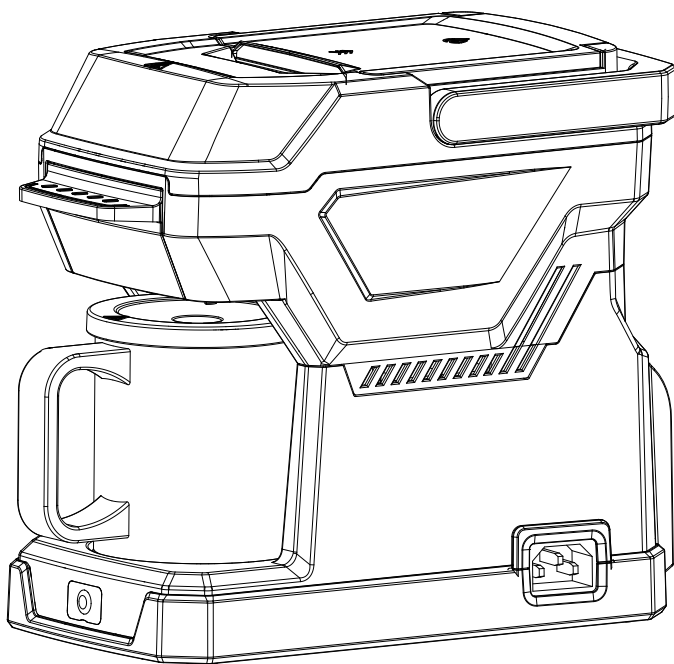




**X2 18V<sup>\*</sup> LITHIUM-ION +AC**

## PORTABLE HYBRID COFFEE MAKER



**CAUTION:** Before using this tool, please read this manual completely, and follow all operating safety measures.

- SAFETY
- ASSEMBLY
- OPERATION
- MAINTENANCE

**Senix Australia Pty Ltd.** 32/3 Westside Avenue, #Port Melbourne, Victoria, 3207  
For customer support, please call **1300 461 825** or email us at [info@senixtool.com](mailto:info@senixtool.com)

# TABLE OF CONTENTS

SAFETY & INTERNATIONAL SYMBOLS.....	2
SAFETY INSTRUCTIONS.....	3
KNOW YOUR UNIT .....	5
SPECIFICATIONS.....	6
ASSEMBLY.....	6
OPERATION.....	6
MAINTENANCE.....	8
TROUBLESHOOTING.....	10

## SAFETY & INTERNATIONAL SYMBOLS

Explanation of Safety & international symbols describes safety and international symbols and pictographs that may appear on this product. Read the operator's manual for complete safety, assembly, operating and maintenance and repair information.



Caution / Warning.



To reduce the risk of injury, user must read instruction manual.



Wear protective gloves.



Do not dispose of battery packs in rivers or immerse in water.



Do not dispose of battery packs in fire. They will explode and cause injury.



Use and store the battery within an temperature below 50°C.



Do not disassemble, crush, heat above 100°C. Never expose the battery to microwaves or high pressures.



Indoor use only. Only use battery charger indoors.



Remove plug from the mains immediately if the power cord/ extension cord is damaged or cut.



Waste electrical products should not be disposed of with household waste. Please recycle where facilities exist. Check with your Local Authority or local store for recycling advice.



Crossed out dust bin. Batteries and battery packs should not be disposed of with household waste. Please recycle where facilities exist. Check with your Local Authority or local store for recycling advice.



RCM Mark

# SAFETY INSTRUCTIONS

**This machine may cause serious injury if used improperly. To avoid personal injury and damage to property, read and comply with the following safety instructions and familiarise yourself with all control elements.**



## WARNING!

Read all safety warnings, instructions, illustrations and specifications, provided with this coffee maker. Save all warnings and instructions for future reference.

## READ ALL INSTRUCTIONS

1. Do not touch hot surfaces. Use handles or knobs.
2. To protect against fire, electric shock and injury to persons, do not immerse cord, plugs, or machine in water or other liquid.
3. Close supervision is necessary when any appliance is used by or near children.
4. Unplug from outlet when not in use and before cleaning. Allow to cool before putting on or taking off parts, and before cleaning the appliance.
5. Do not operate any appliance with a damaged cord or plug or after the appliance malfunctions, or has been damaged in any manner. Return appliance to the nearest authorized service facility for examination, repair or adjustment.
6. The use of accessory attachments not recommended by the appliance manufacturer may result in fire, electric shock or injury to persons.
7. Do not expose the product to rain or wet conditions.
8. Do not let AC power cord hang over edge of table or counter, or touch hot surfaces.
9. Do not place on or near a hot gas or electric burner, or in a heated oven.
10. Always attach AC power cord to appliance first, then plug AC power cord into the wall outlet. To disconnect the AC power cord, turn the appliance off, then remove the AC power cord plug from wall outlet.
11. Do not use appliance for other purpose than intended use.
12. Save these Instructions.
13. Scalding may occur if the lid is removed during the brewing cycles.
14. **WARNING:** Read all safety warnings and instructions. Failure to follow the warnings and instructions may result in electric shock, fire and/or serious injury.
15. Prevent unintentional starting. Ensure the switch is in the off-position before connecting to battery pack, picking up or carrying the appliance. Carrying the appliance with your finger on the switch or energizing appliance that have the switch on invites accidents.
16. Disconnect the battery pack from the appliance before making any adjustments, changing accessories, or storing appliance. Such preventive safety measures reduce the risk of starting the appliance accidentally. Recharge only with the charger specified by the manufacturer. A charger that is suitable for one type of battery pack may create a risk of fire when used with another battery pack.
17. Use appliances only with specifically designated battery packs. Use of any other battery packs may create a risk of injury and fire.
18. When battery pack is not in use, keep it away from other metal objects, like paper clips, coins, keys, nails, screws or other small metal objects, that can make a connection from one terminal to another. Shorting the battery terminals together may cause burns or a fire.
19. Under abusive conditions, liquid may be ejected from the battery; avoid contact. If contact accidentally occurs, flush with water. If liquid contacts eyes, additionally seek medical help. Liquid ejected from the battery may cause irritation or burns.
20. Do not use a battery pack or appliance that is damaged or modified. Damaged or modified batteries may exhibit unpredictable behavior resulting in fire, explosion or risk of injury.
21. Do not expose a battery pack or appliance to fire or excessive temperature. Exposure to fire or temperature above 130°C may cause explosion.
22. Follow all charging instructions and do not charge the battery pack or appliance outside of the temperature range specified in the instructions. Charging improperly or at temperatures outside of the specified range may damage the battery and increase the risk of fire.
23. Appliance should be properly repaired or replaced by a qualified service center to avoid risk of personal injury.
24. Do not modify or attempt to repair

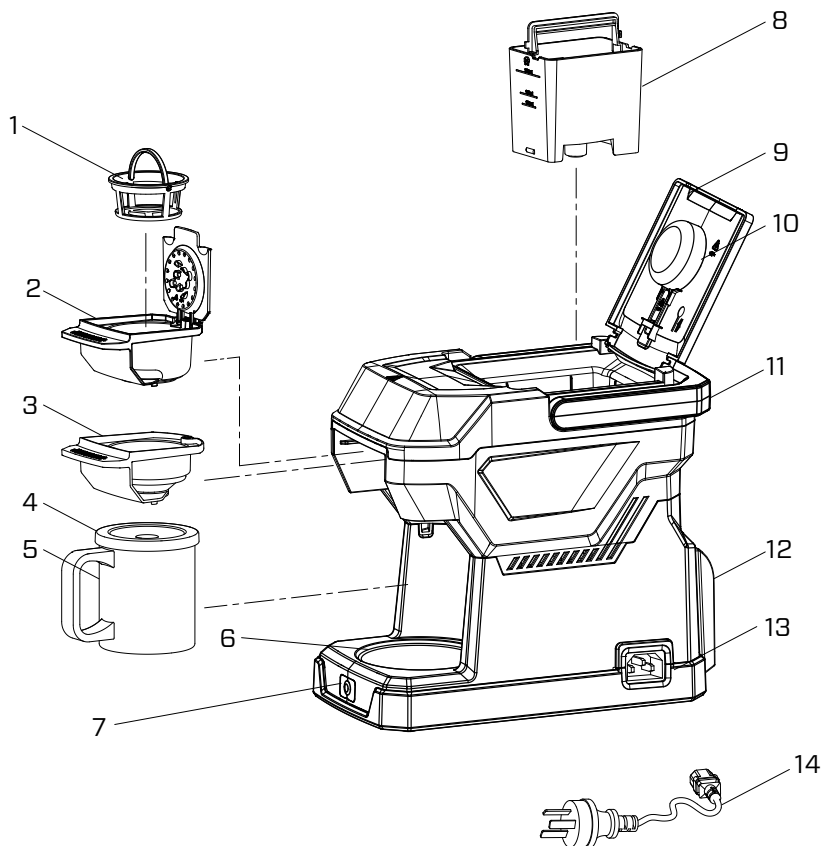
the appliance or the battery pack (as applicable) except as indicated in the instructions for use and care.

## **SAVE THESE INSTRUCTIONS**

### **INTENDED USE**

This appliance is intended for brewing coffee in household and similar applications.

# KNOW YOUR UNIT



## APPLICATIONS

Model: CMX2-M8-EU

As a coffee maker:

Brewing ground coffee and coffee pods in residential applications.

1	Filter
2	Filter Holder
3	Coffee Pod Holder
4	Coffee Cup Cover
5	Coffee Cup
6	Cup Rest
7	Power Button with Indicator

8	Water Tank
9	Water Tank Lid
10	Measuring Spoon
11	Handle
12	Battery Docking Port
13	AC Power Cord Receptacle
14	AC Power Cord

## SPECIFICATIONS

Model CMX2-M8-EU	
Rated Voltage	DC 18 V $\approx$ (20 V $\approx$ Max*) / AC 220 - 240V
Rated Output	220 W
Operating Time	4 Cups on (1) 5.0 Ah Battery
Water Tank Capacity	240 ml
Coffee Cup Capacity	280 ml
Brewing Time	6 - 8 min
Weight	1.5 kg

\*20V Max battery, maximum initial battery voltage (measured without a workload) is 20V. The nominal voltage is 18V.

## ASSEMBLY

1. Unpack all parts and lay them on a flat, stable surface.
2. Remove all packing materials and shipping devices, if applicable.
3. The scope of delivery varies depending on the country and purchased variant.
  - Coffee Maker x1
  - Coffee Cup x1
  - AC Power Cord x1
  - Instruction Manual x1
4. If you find that parts are damaged or missing, do not use the product and contact your dealer. Using an incomplete or damaged product is dangerous to people and property.
5. Ensure that you have all the accessories and tools needed for assembly and operation. This also includes suitable personal protective equipment.



### WARNING!



Wear protective gloves for this assembly work and always lay the product on a flat and stable surface while assembling.



Follow the assembly instructions step-by-step and use the pictures provided as a visual guide to easily assemble the product!  
Do not insert the battery pack or connect to the power supply before the power tool is completely assembled or adjusted!

## OPERATION

### PREPARATION

If you are using the coffee maker for the first time or if it has been in storage for a long time, perform the following steps:

1. Remove all packing material from the carton.
2. Clean the machine housing and wash all removable parts refer to "CLEANING" section.
3. To remove any residues from the machine, pour 160 ml fresh water into the water tank and boil the water WITHOUT coffee grounds/coffee pod in the filter holder or coffee pod holder. Repeat the same process at least twice refer to "BREWING" section.



### WARNING!

Never touch the hot surface or remove the water tank lid when the machine is working. Scalding may occur if the lid is removed during the brewing cycles. Follow all safety instructions when using this coffee maker.



### WARNING!

Do not shake the machine while it's working to avoid it tipping over and burning you.



### WARNING!

The power button flashes to show the machine is in an abnormal state. Brewing operation can be performed only when all abnormalities are eliminated and power button indicates normally. See troubleshooting section for additional guidance.

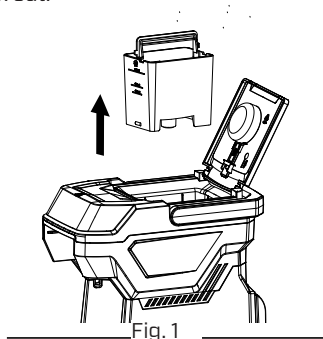


### WARNING!

There are two ways to connect the power source. Choose either one according to your needs.

## BREWING

1. Open the water tank lid and take the water tank out.



2. Water required depends on different type of coffee. Pour preferred amount of fresh cold water into the water tank and place it back to the appliance.

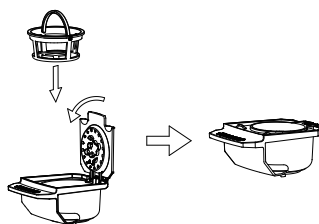
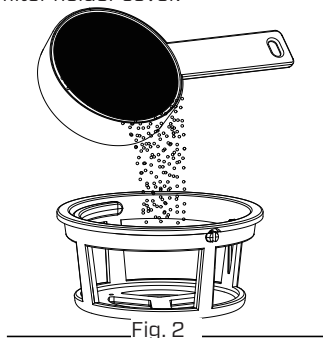


### WARNING!

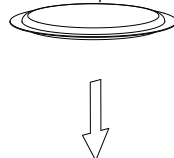
The maximum water tank capacity is 240ml. Do not pour too much water to the water tank. Excess water may come out of the overflow opening.

Coffee Type	Recommended water volume
Ground coffee (6.5 g)	160 ml
Coffee Pod (60 mm)	120 ml

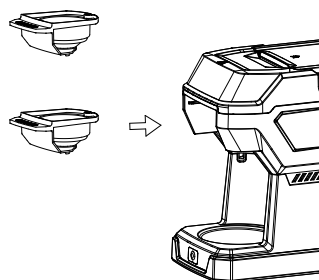
3. Close the water tank lid.
4. Remove the filter holder or coffee pod holder.
5. a. Fill the filter with one or two spoons ground coffee (appropriate 6g-12g). Put the filter back to the filter holder and close the filter holder cover.



- b. Put a coffee pod into the coffee pod holder. Make sure the flat surface with obvious pattern is always facing up. Do not use a torn coffee pod or insert more than one pod in the coffee pod holder.



6. Replace the filter holder/coffee pod holder to the machine.



7. Set the coffee cup on the cup rest with its lid on.
8. a. Slide the battery pack along the battery docking port until it is completely locked. It's recommended to have the machine powered by a fully charged battery.

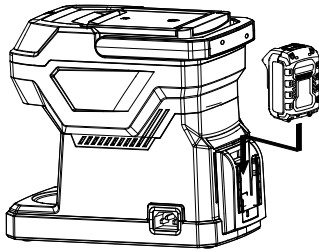


Fig. 6

b. Connect the coffee maker to the power supply by the power cord.

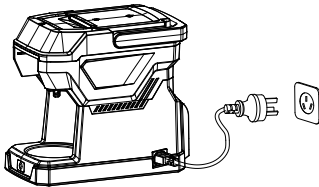


Fig. 7

9. Press the power button. The indicator lights up shows the brewing cycle begins.

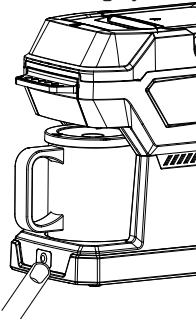


Fig. 8

10. The machine will automatically power off when the brewing cycle is finished. Press the power button if you want to stop the brewing.
11. Take the coffee cup out of cup rest to enjoy your coffee.
12. If no further use is required, press the unlock button and pull the battery out.
13. After use, see the "CLEANING" section for cleaning.

## MAINTENANCE



### WARNING!

To avoid serious personal injury, always remove the battery pack or disconnect the machine from power cord and allow all parts to cool down before cleaning and maintenance.



### WARNING!

Only perform cleaning and maintenance work according to these instructions! All further works must be performed by a qualified specialist!

The use of accessory attachments not recommended by the equipment manufacturer may result in fire, electric shock or injury to persons.

## DEPOSITS REMOVAL

Water scale builds up inside pipes as a result of long-term use which hinders the water flow and extend the dripping time. If the dripping time has increased, clean the internal pipe with citric acid.

1. Take the water tank out and pour 240 ml of water into it.
2. Add 5 g of citric acid commercially available into the water and stir it up.
3. Install the water tank into the machine.
4. Remove the filter holder/cafe pod holder from the machine.
5. Put the coffee cup on the cup rest.
6. Press the power button to start the machine.
7. After the dripping is finished, take the water tank and the coffee cup out and rinse them with water.
8. Pour 240 ml of water to the water tank and install it into the machine.
9. Put the coffee cup on the cup rest.
10. Press the power button and wait until the dripping process is complete.

Repeat the step several times if you taste or smell citric acid. Repeat the above procedures if the dripping still takes time.

## CLEANING

- Remove battery pack or disconnect from power supply and allow the machine to cool down.
- Empty the filter or remove the coffee pod



- from the coffee pod holder.
- Wash the filter, filter holder, coffee pod holder, water tank, coffee cup with its lid and the measuring spoon thoroughly with hot water.
- Allow them to dry completely. Do not dry inner surface with a cloth as something may be left inside.
- Install all parts back to the coffee maker.
- Wipe the exterior with a soft cloth moistened with water.



### NOTE:

Do not use chemical, alkaline, abrasive or other aggressive detergents or disinfectants to clean this product as they might be harmful to its surfaces. To protect against fire, electric shock and injury to persons do not immerse the machine in water or other liquid.

## TRANSPORTATION

- Clean the product as described above.
- Allow the machine to cool down completely before carrying or storing it.
- Only carry by its handle.
- Protect the product from any heavy impact or strong vibrations which may occur during transportation in vehicles.
- Secure the product to prevent it from slipping or falling over, damage or injury.

## STORAGE

1. Examine the product thoroughly for worn, loose or damaged parts.
2. Clean the product as described above.
3. Store the product indoors in a locked, dry place out of the reach of children to prevent unauthorized use or damage.
4. We recommend using the original package for storage or covering the product with a suitable cloth or enclosure to protect it against dust.



### NOTE:

To prolong battery life, store the battery pack separately from the tool in a 30%-50% charged condition. It's recommended to have your battery pack charged at least every 6 months.

## DISPOSAL

Product should not be disposed of with household waste. Please recycle at a proper waste facility. Check with your local authority or retailer for recycling information.



Electrical products should not be discarded with household products. Used electrical products must be collected separately and disposed of at collection points provided for this purpose. Talk with your local authorities or dealer for advice on recycling.

## TROUBLESHOOTING

Suspected malfunctions are often due to causes that the users can fix themselves. Therefore, check the product using this section. In most cases the problem can be solved quickly.

Problem	Possible Cause	Solution
Product does not start	Battery pack is not properly attached	Attach properly
	Battery pack is completely discharged	Charge the battery pack
	Power cord is disconnected	Properly connect the power cord to power supply
	Power cord is defective	Replace with a new one
The power button flashes in red	Battery pack is overheated	Let it cool down
	Battery pack capacity too low	Charge the battery
	Water tank not in place	Make sure the tank is fully in place
	Water tank is empty	Add water to the water tank
	Parts in the machine are damaged	Contact the maintenance professional to check or repair
Water leakage	Too much water	Drain excessive water
	Seal ring damage	Contact the maintenance professional to check or repair
Leakage on the outside of the filter holder	Excessive coffee grounds	Ensure 6 - 12 g of coffee grounds are in the filter, remove excess grounds
Poor drainage	Internal pipe blockage	Contact the maintenance professional to check or repair