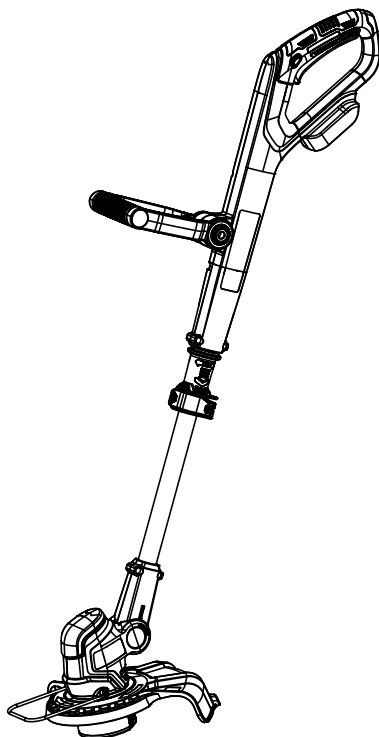




---

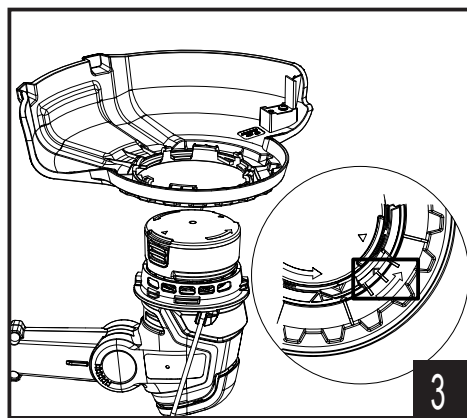
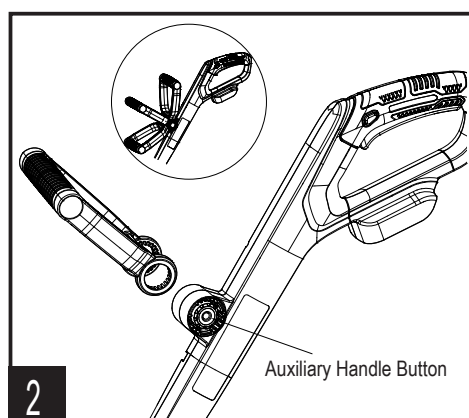
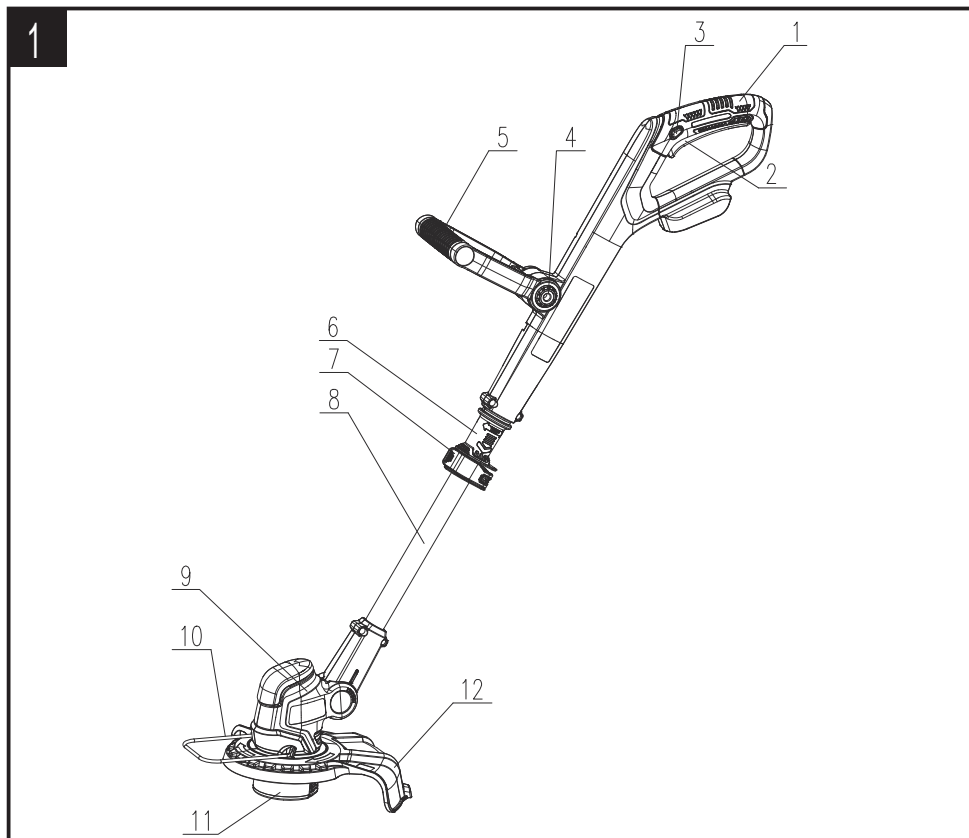
# 20V MAX LITHIUM ION GRASS TRIMMER

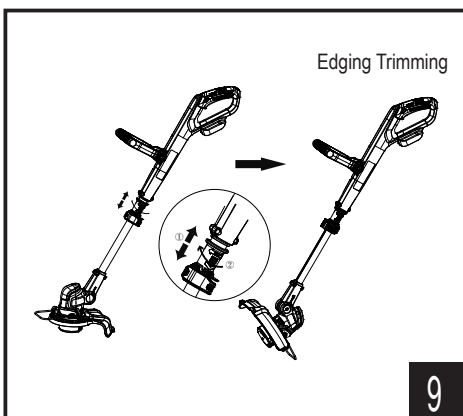
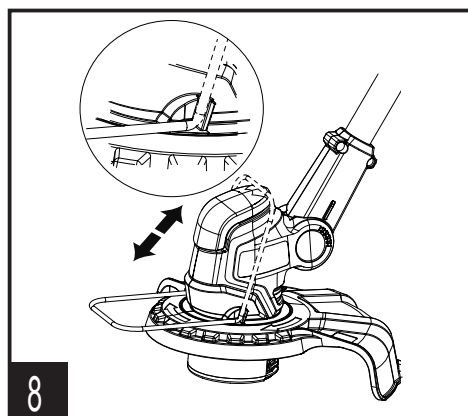
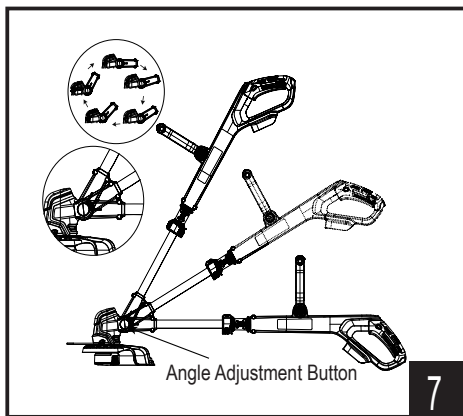
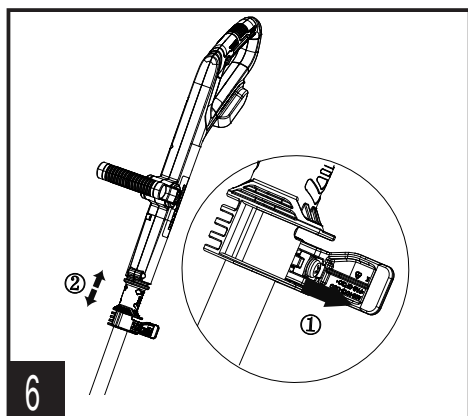
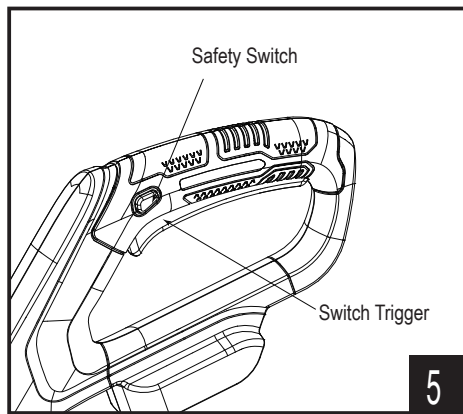
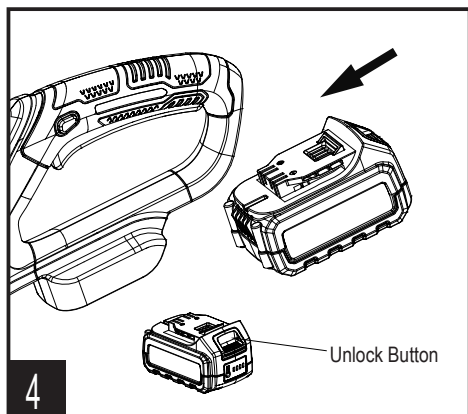
Model: GTX2-M-EU

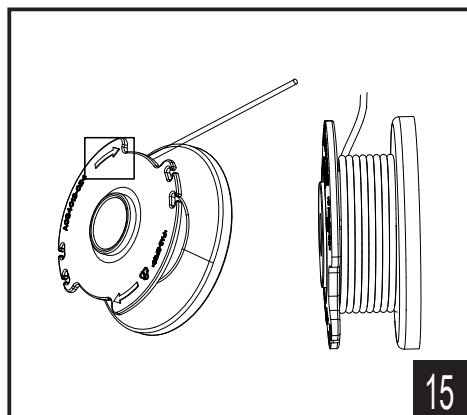
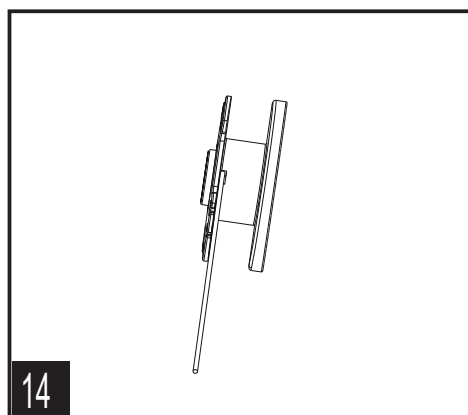
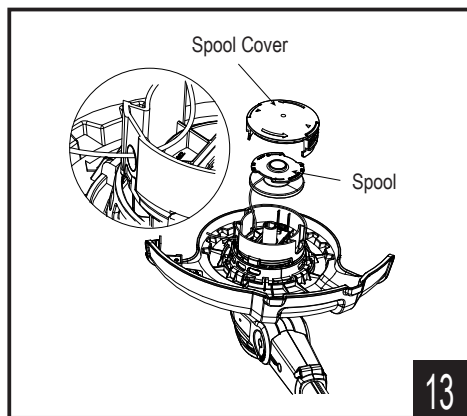
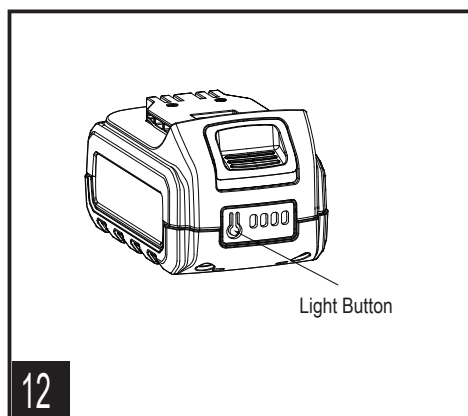
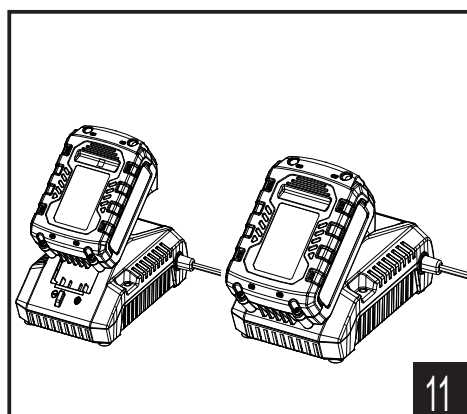
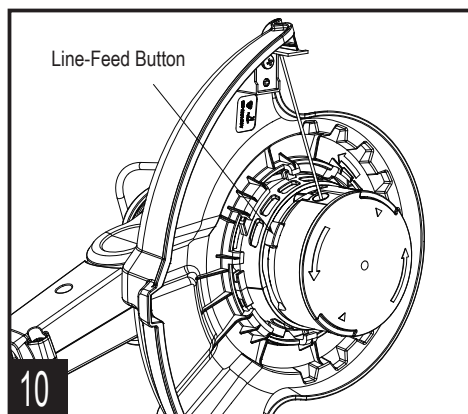


For customer service please find all information on [www.senixtools.com](http://www.senixtools.com)  
CAUTION: BEFORE USING THIS PRODUCT, READ THIS MANUAL AND  
FOLLOW ALL ITS SAFETY RULES AND OPERATING INSTRUCTIONS.

ORIGINAL INSTRUCTIONS







# TABLE OF CONTENTS

SAFETY & INTERNATIONAL SYMBOLS .....	5
SAFETY INSTRUCTIONS.....	6
KNOW YOUR UNIT.....	16
SPECIFICATIONS* .....	16
ASSEMBLY.....	17
OPERATION.....	18
MAINTENANCE.....	20
TROUBLESHOOTING.....	21

## SAFETY & INTERNATIONAL SYMBOLS

Explanation of Safety & international symbols describes safety and international symbols and pictographs that may appear on this product. Read the operator's manual for complete safety, assembly, operating and maintenance and repair information.



Caution / Warning.



To reduce the risk of injury, user must read instruction manual.



Always wear eye protection, ear protection and head protection meeting ANSI Z87.1 standards.



Wear protective gloves.



Wear sturdy, non-slip footwear.



Beware of foot injury by cutting attachment.



Beware of objects flung by cutting attachments.  
Never use without properly mounted protection guard.



Beware of objects flung by cutting attachments..  
Never use without properly mounted protection guard.



Keep all bystanders at least 15m away.



Don't install or use any type of blade on the unit displaying this symbol.



Do not use in rain or wet conditions.



Do not dispose of battery packs in rivers or immerse in water.



Do not dispose of battery packs in fire. They will explode and cause injury.



Use and store the battery within an temperature below 50°C.



Do not disassemble, crush, heat above 100°C; Never expose the battery to microwaves or high pressures.



Class II equipment (Charger).



Single mark of circulation of products on the market of the Member States of the Customs Union.



Crossed out dust bin. Batteries and battery packs should not be disposed of with household waste. Please recycle where facilities exist. Check with your Local Authority or local store for recycling advice.



Waste electrical products should not be disposed of with household waste. Please recycle where facilities exist. Check with your Local Authority or local store for recycling advice.

# SAFETY INSTRUCTIONS

## GENERAL POWER TOOL SAFETY WARNINGS



### **WARNING:**

Read all safety warnings, instructions, illustrations and specifications provided with this power tool. Failure to follow all instructions listed below may result in electric shock, fire and/or serious injury.

Save all warnings and instructions for future reference.

The term "power tool" in the warnings refers to your mains-operated (corded) power tool or battery-operated (cordless) power tool.

### **1) Work area safety**

- a) Keep work area clean and well lit. Cluttered or dark areas invite accidents.
- b) Do not operate power tools in explosive atmospheres, such as in the presence of flammable liquids, gases or dust. Power tools create sparks which may ignite the dust or fumes.
- c) Keep children and bystanders away while operating a power tool. Distractions can cause you to lose control.

### **2) Electrical safety**

- a) Power tool plugs must match the outlet. Never modify the plug in any way. Do not use any adapter plugs with earthed (grounded) power tools. Unmodified plugs and matching outlets will reduce risk of electric shock.
- b) Avoid body contact with earthed or grounded surfaces, such as pipes, radiators, ranges and refrigerators. There is an increased risk of electric shock if your body is earthed or grounded.
- c) Do not expose power tools to rain or wet conditions. Water entering a power tool will increase the risk of electric shock.
- d) Do not abuse the cord. Never use the cord for carrying, pulling or unplugging the power tool. Keep cord away from heat, oil, sharp edges or moving parts. Damaged or entangled cords increase the risk of electric shock.
- e) When operating a power tool outdoors, use an extension cord suitable for outdoor use. Use of a cord suitable for outdoor use reduces the risk of electric shock.
- f) If operating a power tool in a

damp location is unavoidable, use a residual current device (RCD) protected supply. Use of an RCD reduces the risk of electric shock.

### **3) Personal safety**

- a) Stay alert, watch what you are doing and use common sense when operating a power tool. Do not use a power tool while you are tired or under the influence of drugs, alcohol or medication. A moment of inattention while operating power tools may result in serious personal injury.
- b) Use personal protective equipment. Always wear eye protection. Protective equipment such as dust mask, non-skid safety shoes, hard hat, or hearing protection used for appropriate conditions will reduce personal injuries.
- c) Prevent unintentional starting. Ensure the switch is in the off-position before connecting to power source and/or battery pack, picking up or carrying the tool. Carrying power tools with your finger on the switch or energising power tools that have the switch on invites accidents.
- d) Remove any adjusting key or wrench before turning the power tool on. A wrench or a key left attached to a rotating part of the power tool may result in personal injury.
- e) Do not overreach. Keep proper footing and balance at all times. This enables better control of the power tool in unexpected situations.
- f) Dress properly. Do not wear loose clothing or jewellery. Keep your hair, clothing and gloves away from moving parts. Loose clothes, jewellery or long hair can be caught in moving parts.
- g) If devices are provided for the connection of dust extraction and collection facilities, ensure these are connected and properly used. Use of dust collection can reduce dust-related hazards.
- h) Do not let familiarity gained from frequent use of tools allow you to become complacent and ignore tool safety principles. A careless action can cause severe injury within a fraction of a second.

### **4) Power tool use and care**

- a) Do not force the power tool. Use the correct power tool for your application. The correct power tool will do the job better and

safer at the rate for which it was designed.

- b) Do not use the power tool if the switch does not turn it on and off. Any power tool that cannot be controlled with the switch is dangerous and must be repaired.
- c) Disconnect the plug from the power source and/or the battery pack from the power tool before making any adjustments, changing accessories, or storing power tools. Such preventive safety measures reduce the risk of starting the power tool accidentally.
- d) Store idle power tools out of the reach of children and do not allow persons unfamiliar with the power tool or these instructions to operate the power tool. Power tools are dangerous in the hands of untrained users.
- e) Maintain power tools. Check for misalignment or binding of moving parts, breakage of parts and any other condition that may affect the power tool's operation. If damaged, have the power tool repaired before use. Many accidents are caused by poorly maintained power tools.
- f) Keep cutting tools sharp and clean. Properly maintained cutting tools with sharp cutting edges are less likely to bind and are easier to control.
- g) Use the power tool, accessories and tool bits etc. in accordance with these instructions, taking into account the working conditions and the work to be performed. Use of the power tool for operations different from those intended could result in a hazardous situation.
- h) Keep handles and grasping surfaces dry, clean and free from oil and grease. Slippery handles and grasping surfaces do not allow for safe handling and control of the tool in unexpected situations.

## **5) Battery tool use and care**

- a) Recharge only with the charger specified by the manufacturer. A charger that is suitable for one type of battery pack may create a risk of fire when used with another battery pack.
- b) Use power tools only with specifically designated battery packs. Use of any other battery packs may create a risk of injury and fire.
- c) When battery pack is not in use, keep it away from other metal



objects, like paper clips, coins, keys, nails, screws or other small metal objects, that can make a connection from one terminal to another. Shorting the battery terminals together may cause burns or a fire.

- d) Under abusive conditions, liquid may be ejected from the battery; avoid contact. If contact accidentally occurs, flush with water. If liquid contacts eyes, additionally seek medical help. Liquid ejected from the battery may cause irritation or burns.
- e) Do not use a battery pack or tool that is damaged or modified. Damaged or modified batteries may exhibit unpredictable behaviour resulting in fire, explosion or risk of injury.
- f) Do not expose a battery pack or tool to fire or excessive temperature. Exposure to fire or temperature above 130 °C may cause explosion.
- g) Follow all charging instructions and do not charge the battery pack or tool outside the temperature range specified in the instructions. Charging improperly or at temperatures outside the specified range may damage the battery and increase

the risk of fire.

## **6) Service**

- a) Have your power tool serviced by a qualified repair person using only identical replacement parts. This will ensure that the safety of the power tool is maintained.
- b) Never service damaged battery packs. Service of battery packs should only be performed by the manufacturer or authorized service providers.

## **SPECIFIC SAFETY WARNINGS FOR GRASS TRIMMER**

### **1) Training**

- a) Read the instructions carefully. Be familiar with the controls and the correct use of the machine.
- b) Never allow children or people unfamiliar with these instructions to use the machine. Local regulations can restrict the age of the operator.
- c) Keep in mind that the operator or user is responsible for accidents or hazards occurring to other people or their property.

### **2) Preparation**

- a) Before use, always visually inspect the machine for

damaged, missing or misplaced guards or shields.

- b) Never operate the machine while people, especially children, or pets are nearby.

### **3) Operation**

- a) Wear eye protection and stout shoes at all times while operating the machine.
- b) Avoid using the machine in bad weather conditions especially when there is a risk of lightning.
- c) Use the machine only in daylight or good artificial light.
- d) Never operate the machine with damaged guards or shields or without guards or shields in place.
- e) Switch on the motor only when the hands and feet are away from the cutting means.
- f) Always disconnect the machine from the power supply (i.e. remove the plug from the mains, remove the disabling device or removable battery)
  - 1) whenever the machine is left unattended;
  - 2) before clearing a blockage;
  - 3) before checking, cleaning or working on the machine;
  - 4) after striking a foreign object;
  - 5) whenever the machine starts

vibrating abnormally.

- g) Take care against injury to feet and hands from the cutting means.
- h) Always ensure that the ventilation openings are kept clear of debris.

### **4) Maintenance and storage**

- a) Disconnect the machine from the power supply (i.e. remove the plug from the mains, remove the disabling device or removable battery) before carrying out maintenance or cleaning work.
- b) Use only the manufacturer's recommended replacement parts and accessories.
- c) Inspect and maintain the machine regularly. Have the machine repaired only by an authorized repairer.
- d) When not in use, store the machine out of the reach of children.
- f) Clean and maintenance before storage, and use of a transport cover during transport and storage.

### **ADDITIONAL WARNINGS FOR GRASS TRIMMER**

- a) Never allow people unfamiliar with the instructions to use the

machine.

- d) Always wear protective trousers, gloves and shoes.
- c) Only use the grass trimmer in the manner and for the functions described in these instructions.
- d) Never operate the machine when you are tired, ill or under influence of alcohol, drugs and medicine.
- e) Do not lean over the machine guard, whilst edging – objects may be thrown by the cutting blade/line.
- f) Keep correct working posture, it is necessary for operator to have a rest and changing working position after a period work.
- g) Keep firm footing and balance during operation.
- g) Inspect the area to be cut before each use. Remove all objects such as stones, broken glass, nails, wire, string etc. which can be thrown or become entangled in the cutting head.
- i) Keep cutting head below waist level.
- h) Always cut from left to right so that debris is thrown away from you.
- j) Secure the machine during transport to prevent damage or injury.

- k) After extending new cutting line always return trimmer to its normal operating position before switch on.
- l) If the machine strikes a foreign body, stop the engine immediately and wait for the blade to come to a standstill. Check for signs of damage.

## **BATTERY PACK SAFETY WARNINGS**

- Ensure the switch is in the off position before inserting battery pack. Inserting the battery pack into machines that have the switch on can cause accidents.
- Use only original battery packs intended specifically for this machine. Use of any other battery packs may create a risk of injury and fire.
- Do not open the battery. Danger of short-circuiting.
- Protect the battery against heat (e. g., against continuous intense sunlight and fire) water and moisture. Danger of explosion.
- In case of damage and improper use of the battery, vapours may be emitted. Ventilate the area and seek medical help in case of complaints. The vapours can irritate the respiratory system.

- Use the battery pack only in product family. This measure alone protects the battery against dangerous overload.
- The battery can be damaged by pointed objects such as nails or screwdrivers or by force applied externally. An internal short circuit can occur and the battery can burn, smoke, explode or overheat.
- Do not short-circuit the battery. There is danger of explosion.
- Longest life and best performance can be obtained if the battery pack is charged when the air temperature is between 18°C and 24°C. DO NOT charge the battery pack in an air temperature below 0°C, or above 40°C. This is important and will prevent serious damage to the battery pack.
- Do not store the battery outside or in vehicles. Store the battery within an temperature between 0°C and 50°C.
- Occasionally clean the venting slots and contact pins of the battery pack using a soft, clean and dry brush.

## BATTERY CHARGER SAFETY WARNINGS



Read all safety warnings and instructions before using the charger.



Only for indoor use!



Class II protection.

- This appliance is not intended for use by children and persons with physical, sensory or mental limitations or a lack of experience or knowledge. This appliance can be used by children aged from 8 years and above and persons with reduced physical, sensory or mental capabilities or lack of experience and knowledge if they have been given supervision or instruction concerning use of the appliance in a safe way and understand the hazards involved. Children shall not play with the appliance. Cleaning and user maintenance shall not be made by children without supervision.
- Only charge the Lithium-Ion battery pack with the capacity mentioned in this instruction manual. Do not charge non-

rechargeable batteries.

- The battery and charger must be placed in a well ventilated area.
- Do not operate the battery charger on easily inflammable surfaces (e. g., paper, textiles, etc.) or surroundings. The heating of the battery charger during the charging process can pose a fire hazard.
- Do not cover the ventilation slots of the battery charger. Otherwise, the battery charger can overheat and no longer operate properly.
- The supply cord cannot be replaced. If the cord is damaged the appliance should be scrapped.
- If the supply cord is damaged, it must be replaced by the manufacturer, its service agent or similarly qualified persons in order to avoid a hazard.
- Only use the product as intended by its design and these instructions.
- Ensure that the product is in good condition and well maintained.
- Use correct attachments for the product and ensure they are in good condition.
- Keep tight grip on the handle.
- Maintain this product in accordance with these instructions and keep it well lubricated (where appropriate).
- Plan your work schedule to spread any high vibration tool use across a longer period of time.
- Prolonged use of the product exposes the user to vibrations that can cause a range of conditions collectively known as hand-arm vibration syndrome (HAVS) e. g. fingers going white; as well as specific afflictions such as carpal tunnel syndrome.

## **VIBRATION AND NOISE REDUCTION**

To reduce the impact of noise and vibration emission, limit the time of operation, use low-vibration and low-noise operating modes as well as wear personal protective equipment. Take the following points into account to minimise the vibration and noise exposure risks:

- To reduce this risk when using the product, always wear protective gloves and keep your hands warm.
- The symptoms of HAVS include any combination of the following: Tingling and numbness in the fingers; Not being able to feel

things properly; loss of strength in the hands; fingers going white (blanching) and becoming red and painful on recovery (particularly in the cold and wet, and probably only in the tips at first). Seek medical advice immediately if such symptoms are experienced.

## **EMERGENCY**

Familiarize yourself with the use of this product by means of this instruction manual. Memorize the safety directions and follow them to the letter. This will help to prevent risks and hazards.

1. Always be alert when using this product, so that you can recognize and handle risks early. Fast intervention can prevent serious injury and damage to property.
2. Switch off the product and remove the battery pack if there are malfunctions. Have the product checked by a qualified professional and repaired, if necessary, before you operate it again.

## **RESIDUAL RISKS**

Even if you are operating this

product in accordance with the provisions, residual risks will always still remain. The following dangers can arise in connection with the structure and design of this product:

1. Health defects resulting from vibration emission if the product is being used over longer period of time or not adequately managed and properly maintained.
2. Injuries and damage to property to due to broken accessories or hidden objects that are suddenly dashed.
3. Injuries and damage to property to due to thrown and fallen objects.
4. Prolonged use of this product expose the operator to vibrations and may produce 'whitefinger' disease. In order to reduce the risk, please wear gloves and keep your hands warm. If any of the 'whitefinger' symptoms appear, seek medical advice immediately. 'Whitefinger' symptoms include: numbness, loss of feeling, tingling, pricking, pain, loss of strength, changes in skin colour or condition. These symptoms normally appear in the fingers, hands or wrists. The risk increases at low

temperatures.

## **WARNING!**

This product produces an electromagnetic field during operation! This field may under some circumstances interfere with active or passive medical implants! To reduce the risk of serious or fatal injury, we recommend persons with medical implants to consult their physician and the medical implant manufacturer before operating this product!

## **INTENDED USE**

The 18V cordless grass trimmer is only intended for cutting weed, grass or similar soft vegetation in domestic gardens. It is designed to be used in dry and well-illuminated conditions. Do not use it for others purposes. This product is intended for outdoor use only. Do not use it inside a building under any circumstances.

## KNOW YOUR UNIT

### APPLICATIONS

Model: GTX2-M-EU

As a cordless grass trimmer:

Cutting grass, weeds or soft vegetation in domestic garden.

1	Handle
2	Switch Trigger
3	Safety Switch
4	Auxiliary Handle Button
5	Auxiliary Handle
6	Pipe Sleeve
7	Telescoping Lock Clip
8	Aluminium Pipe
9	Motor Housing
10	Flower Protection
11	Trimmer Head
12	Guard

## SPECIFICATIONS\*



### NOTE:

GTX2-M-EU does not include the charger and the battery pack.

Model	GTX2-M-EU			
Rated voltage	18 V d.c.			
No load speed	8500 rpm			
Cutting line type	Nylon line			
Cutting line diameter	1.6 mm			
Cutting spool capacity	5 m			
Cutting capacity	26 cm			
Weight without battery	2.3 kg			
Battery model	B20X2	B25X2	B40X2	B50X2
Rated voltage	<u>18 V</u> ---	<u>18 V</u> ---	<u>18 V</u> ---	<u>18 V</u> ---
Rated capacity	2.0 Ah	2.5 Ah	4.0 Ah	5.0 Ah
Weight	0.41 kg	0.41 kg	0.68 kg	0.68 kg
Charger model	CHX2		CHQX2	
Rated input	100-240 V ~ 50/60 Hz			
Rated output	21 V, 2 A		21 V, 4 A	
Charging time (for 2.0 Ah battery)	65±5mins		35±5mins	
Charging time (for 2.5 Ah battery)	85±5mins		45±5mins	
Charging time (for 4.0 Ah battery)	135±5mins		65±5mins	
Charging time (for 5.0 Ah battery)	160±5mins		85±5mins	
Protection class (for charger)	□ / II			
Weight	0.37 kg		0.42 kg	



## ASSEMBLY

1. Unpack all parts and lay them on a flat, stable surface:
2. Remove all packing materials and shipping devices, if applicable.
3. The scope of delivery varies depending on the country and purchased variant:

Model of GTX2-M-EU

- Power tool x1
  - Instruction manual x1
  - Auxiliary handle x1
  - Guard x1
4. If you find that parts are missing or show damage do not use the product but contact your dealer. Using an incomplete or damaged product represents a hazard to people and property.
  5. Ensure that you have all the accessories and tools needed for assembly and operation. This also includes suitable personal protective equipment.



### NOTE:

GTX2-M-EU does not include the charger and the battery pack.



### WARNING:



Wear protective gloves for this assembly work and always lay the product on a flat and stable surface while assembling.



Follow the assembly instructions step-by-step and use the pictures provided as a visual guide to easily assemble the product!

Do not insert the battery pack before the power tool is completely assembled or adjusted!

## MOUNTING THE AUXILIARY HANDLE

Keep the auxiliary handle button being pressed, fix the auxiliary handle to the trimmer (Fig.2).

Release the button until achieve you satisfied position.

Make sure the auxiliary handle is well engaged before next step.

## MOUNTING THE GUARD



### WARNING:

To reduce the risk of injury to persons, do not operate without guards in place.

Align the first arrow on the guard with the arrow on the trimmer head, put them together.

Rotate the guard clockwise until the second arrow on the guard matches the arrow on the trimmer head.

Check for the fitting condition between two surfaces (Fig.3).

## INSTALLING THE BATTERY PACK

Insert the charged battery to the battery docking port. Ensure the battery is well seated (Fig.4).

To remove the battery from the machine, press the battery unlock button and pull the battery out.



### NOTE:

Using unsuitable batteries can lead to malfunctions or damage the machine.

## OPERATION



### WARNING:

Inspect the tool for complete installation. Any missing, damaged or misplaced may cause serious injury.  
Wear eye protection, long trousers and stout shoes at all times while operating the power tool.

## SWITCHING ON/OFF

Keep the safety switch being pressed at first. Then press the switch trigger to switch the product on. Release the safety switch once the product is running.

Release the switch trigger to switch the product off (Fig.5).

## ADJUSTING THE LENGTH OF PIPE

Unlock the telescoping lock clip and stretch the aluminium pipe to your desired length.

Lock again when finishing your adjustment (Fig.6).

## ADJUSTING ANGLE OF TRIMMER HEAD

Keep pressing the angle adjustment button, hold the body of trimmer and lead it to ideal position. Judge the well engagement from a sound of "click".

Five optional angles (0~60°) set for meeting your using requirement (Fig.7).

## USING THE FLOWER PROTECTION

Switch the flower protection to the working state by pulling down and clamping it into slot. When the flower protection is not in use, reset it upside (Fig.8).

## EDGING TRIMMING



### WARNING:

Risk of Eye Injury. Use Safety Glasses or Similar Eye Protection.

Stretch the pipe sleeve and rotate 180° clockwise.

It will be automatically locked when arrives at the angel of 180°. Then you can begin edging trimming.

On the contrary, pull the pipe sleeve again and rotate 180° counterclockwise back to normal trimming (Fig.9).

## GENERAL TRIMMING INSTRUCTIONS

Stand in the operating position. Stand up straight. Do not bend over. Keep feet apart and firmly planted.

Move the trimmer left and right, keeping it well away from the body. Cut all grass from top to down.

Inspect the working area and remove all debris that may be entangled in the trimmer head. Also remove any objects that product may throw during cutting.

If the trimmer head is wrapped around with grass, stop the trimmer and clean up.

Avoid trees, flowers, stones, walls and other objects which can cause the line to break.

Check and feed the line regularly to maintain full cutting width and performance.

Some line breakage will occur from:

- Entanglement with foreign matter
- Normal line fatigue
- Attempting to cut thick vegetation
- Forcing the line into objects such as walls or fence posts

## LINE FEEDING

### 1) Semi-automatic Line Feeding

The trimmer is equipped with a semi-automatic feeding system. The system feeds line with every press of the switch trigger.

### 2) Manual Line Feeding

Press the line-feed button and adjust the line to desired length (Fig.10).

## CHARGING THE BATTERY PACK



### WARNING:

This Lithium-Ion battery pack is shipped partially charged. Fully charge the battery pack before using it for the first time.



## NOTE:

Charge batteries at a ambient temperature of 0°C-40°C.

1. Charge the Lithium-Ion battery pack only with the correct charger.
2. Connect the charger to a power supply, the light indicator of the charger turns red.
3. Align the raised ribs of the battery pack with the slot in the charger (Fig.11).
4. Insert the battery pack into the charger, the light indicator of the charger turns green and it flashes.
5. The charger will communicate with the battery pack to evaluate the condition of the battery pack.
6. It is fully charged that the four lights of the battery turn on. Disconnect the power supply from the charger. Remove battery pack from the charger.

## CHARGING INDICATOR

Press the light button on the battery pack to check whether it needs to charge (Fig.12) .

Lights			Remaining Capacity
Lighted	Off	Blinking	
			75% - 100%
			50% - 75%
			25% - 50%
			5% - 25%
			< 5% (need to be charged)



## WARNING:

Malfunctions may occur when the four lights blinking in turns.

## OVERHEAT PROTECTION

When the tool/battery is overheated, the tool stops automatically. In this situation, let the power tool/battery cool before turning the tool on again.

## OVERDISCHARGE PROTECTION

When the battery capacity is not enough, the tool stops automatically. In this case, remove the battery from the tool and charge the battery.

## MAINTENANCE



## WARNING:

Remove the battery pack before maintenance!  
Wear protective gloves and clothing!  
Always wear protective equipments such as gloves and eye protections to reduce the risk of injury when operating this unit.  
Only perform repairs and maintenance work according to these instructions! All further works must be performed by a qualified specialist!  
When servicing use only identical replacement parts. Use of any other accessory or attachment may increase the risk of injury.

## WINDING UP THE CUTTING LINE

Remove the battery before replacing the spool.

Press both latches of the spool cover together and remove the spool cover. Afterwards, remove the empty spool (Fig.13).

Select a line of approx.5m for refilling the spool.

Slide one end of the cutting line approx.5-10mm into the hole for line wind-up in the spool (Fig.14).

Wind up the cutting line uniformly and tightly following the direction indicated by the arrow on spool (Fig.15).

Slide the other end of the cutting line through the hole for line guiding in the trimmer head (Fig.13).

Mount the spool back into the trimmer head and straighten the line. Affix the spool by reinstalling the spool cover at last (Fig.13).



### NOTE:

Only use cutting line consistent with "SPECIFICATION" for replacement.

## CLEANING

Switch the product off, pull out the battery pack from the product. Use a small brush to clean the outside of the unit. Do not use strong detergents. Household cleaners that contain aromatic oils such as pine and lemon, and solvents such as kerosene, can damage plastic. Wipe off any moisture with a soft cloth.



### NOTE:

If the trimmer head is blocked by foreign objects during operation, stop the product, wait till the product stops entirely, then remove the foreign objects and clean the trimmer head. Clean moving parts may result in hazardous injury.

## TRANSPORT

- Clean the product as described above.
- Always carry the product by its handle.
- Protect the product from any heavy impact or strong vibrations which may occur during transportation in vehicles.
- Secure the product to prevent it from slipping or falling over, damage or injury.

## STORAGE

- Clean the product as described above.
- Store the product and its accessories in a dark, dry, frost-free, well-ventilated place.
- Always store the product in a place that is inaccessible to children. The ideal storage temperature is between 10°C and 30°C.
- We recommend using the original package for storage or covering the product with a suitable cloth or enclosure to protect it against dust.



### NOTE:

To prolong battery life, never store battery pack in a completely discharged condition. Make sure the battery pack is charged once per year or when the LED indicator shows only one light.

## DISPOSAL

Waste product should not be disposed of with household waste. Please recycle where facilities exist.

Check with your local authority or retailer for recycling advice.



Electrical products should not be discarded with household products. Used electrical products must be collected separately and disposed of at collection points provided for this purpose. Talk with your local authorities or dealer for advice on recycling.

## TROUBLESHOOTING

Suspected malfunctions are often due to causes that the users can fix themselves. Therefore, check the product using this section. In most cases the problem can be solved

quickly.

PROBLEM	POSSIBLE CAUSE	SOLUTION
Product does not start	Battery pack not properly attached	Attach properly
	Battery too hot/cold	Allow to cool/warm
	Battery pack discharged	Charge the battery pack
Product does not cut	Cutting line too short/broken off	Manually feed cutting line
	Spool empty	Replace line spool
Cutting line can no longer be fed	Line inside the spool entangled	Inspect the spool, rewind if necessary
	Spool empty	Refill line spool
Cutting line breaks frequently	Line inside the spool entangled	Remove spool – rewind line
	Trimmer used incorrectly	Only trim with the tip of the line, avoid stones, walls and other hard objects. Feed the line regularly to maintain full cutting diameter.
Heavy vibrations	Cutting line broken	Pull out cutting line with manual feed
	Cutting system damaged	Have the product repaired by a qualified service.
	Grass between spool housing and line-feed button	Disassemble spool cover and remove grass
	Grass in hole for line feed	Remove grass from hole for line feed