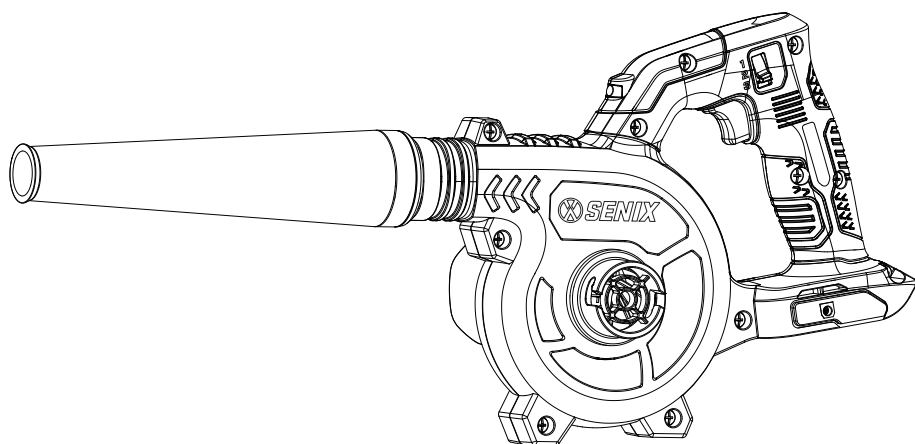




CORDLESS JOBSITE BLOWER/VACUUM



CAUTION: Before using this tool, please read this manual completely, and follow all operating safety measures.

- SAFETY
- ASSEMBLY
- OPERATION
- MAINTENANCE
- WARRANTY

YAT USA INC. 10506 Bryton Corporate Center Dr, #500 Huntersville, NC 28078
For customer support, please call 1-800-261-3981 or email us at senix.support@yatusa.com

TABLE OF CONTENTS

SAFETY & INTERNATIONAL SYMBOLS.....	2
SAFETY INSTRUCTIONS.....	3
KNOW YOUR UNIT.....	6
SPECIFICATIONS.....	7
ASSEMBLY.....	7
OPERATION.....	8
MAINTENANCE.....	10
TROUBLESHOOTING.....	12
WARRANTY.....	13

SAFETY & INTERNATIONAL SYMBOLS

The following table depicts and describes safety and international symbols and pictographs that may appear on this product. Read, understand, and follow all instructions on the machine and in the instruction manual for complete safety, assembly, operating, maintenance, and repair information before attempting to assemble and operate.



Caution / Warning.



To reduce the risk of injury, user must read instruction manual.



Keep bystanders away.



Wear eye protection.



Wear ear protection.



Do not use in rain or wet conditions.



Rotating blades. Keep hands and feet away from the openings, while the machine is running.



Failure to keep long hair away from the air intake could result in personal injury.



Failure to keep loose clothing from being drawn into air intake vents could result in personal injury.



Do not operate without tube in place.



Keep all bystanders at least 50 ft. away.



Thrown objects can ricochet and result in personal injury or property damage.



Do not dispose of battery packs in rivers or immerse in water.



Do not dispose of battery packs in fire. They will explode and cause injury.



Do not disassemble, crush, heat above 212°F (100°C); Never expose the battery to microwaves or high pressures.



Indoor use only. Only use battery charger indoors.



Complies with ETL standards.

SAFETY INSTRUCTIONS

GENERAL MACHINE SAFETY WARNINGS



WARNING!

Read all safety warnings, instructions, illustrations and specifications, provided with this machine. Failure to follow all instructions listed below may result in electric shock, fire and/or serious injury.

Save all warnings and instructions for future reference.

The term “machine” in the warnings refers to your mains-operated (corded) machine or battery-operated (cordless) machine.

1. Work Area Safety

- a. **Keep work area clean and well lit.** Cluttered or dark areas invite accidents.
- b. **Do not operate machines in explosive atmospheres, such as in the presence of flammable liquids, gases or dust.** Machines create sparks which may ignite the dust or fumes.
- c. **Keep children and bystanders away while operating a machine.** Distractions can cause you to lose control.

2. Electrical Safety

- a. **Machine plugs must match the outlet. Never modify the plug in any way. Do not use any adapter plugs with earthed (grounded) machines.** Unmodified plugs and matching outlets will reduce risk of electric shock.
- b. **Avoid body contact with earthed or grounded surfaces, such as pipes, radiators, ranges and refrigerators.** There is an increased risk of electric shock if your body is earthed or grounded.
- c. **Do not expose machines to rain or wet conditions.** Water entering a machine will increase the risk of electric shock.
- d. **Do not abuse the cord. Never use the cord for carrying, pulling or unplugging the machine. Keep cord away from heat, oil, sharp edges or moving parts.** Damaged or entangled cords increase the risk of electric shock.
- e. **When operating a machine outdoors, use an extension cord suitable for outdoor use.** Use of a cord suitable for outdoor use reduces the risk of electric

shock.

- f. **If operating a machine in a damp location is unavoidable, use a ground fault circuit interrupter (GFCI) protected supply.** Use of a GFCI reduces the risk of electric shock.
-
3. **Personal Safety**
 - a. **Stay alert, watch what you are doing and use common sense when operating a machine. Do not use a machine while you are tired or under the influence of drugs, alcohol or medication.** A moment of inattention while operating machines may result in serious personal injury.
 - b. **Use personal protective equipment. Always wear eye protection.** Protective equipment such as a dust mask, non-skid safety shoes, hard hat or hearing protection used for appropriate conditions will reduce personal injuries.
 - c. **Prevent unintentional starting. Ensure the switch is in the off-position before connecting to power source and/or battery pack, picking up or carrying the machine.** Carrying machines with your finger on the switch or energizing machines that have the switch on invites accidents.
 - d. **Remove any adjusting key or wrench before turning the machine on.** A wrench or a key left attached to a rotating part of the machine may result in personal injury.
 - e. **Do not overreach. Keep proper footing and balance at all times.** This enables better control of the machine in unexpected situations.
 - f. **Dress properly. Do not wear loose clothing or jewelry. Keep your hair, clothing and gloves away from moving parts.** Loose clothes, jewelry or long hair can be caught in moving parts.
 - g. **If devices are provided for the connection of dust extraction and collection facilities, ensure these are connected and properly used.** Use of dust collection can reduce dust-related hazards.
 - h. **Do not let familiarity gained from frequent use of machines allow you to become complacent and ignore machine safety principles.** A careless action can cause severe injury within a fraction of a second.

4. Machine Use and Care

- a. **Do not force the machine. Use the**

correct machine for your application.

The correct machine will do the job better and safer at the rate for which it was designed.

- b. **Do not use the machine if the switch does not turn it on and off.** Any machine that cannot be controlled with the switch is dangerous and must be repaired.
 - c. **Disconnect the plug from the power source and/or remove the battery pack, if detachable, from the machine before making any adjustments, changing accessories, or storing machines.** Such preventive safety measures reduce the risk of starting the machine accidentally.
 - d. **Store idle machines out of the reach of children and do not allow persons unfamiliar with the machine or these instructions to operate the machine.** Machines are dangerous in the hands of untrained users.
 - e. **Maintain machines and accessories.** Check for misalignment or binding of moving parts, breakage of parts and any other condition that may affect the machine's operation. If damaged, have the machine repaired before use. Many accidents are caused by poorly maintained machines.
 - f. **Keep cutting machines sharp and clean.** Properly maintained cutting machines with sharp cutting edges are less likely to bind and are easier to control.
 - g. **Use the machine, accessories and machine bits etc. in accordance with these instructions, taking into account the working conditions and the work to be performed.** Use of the machine for operations different from those intended could result in a hazardous situation.
 - h. **Keep handles and grasping surfaces dry, clean and free from oil and grease.** Slippery handles and grasping surfaces do not allow for safe handling and control of the machine in unexpected situations.
- 5. Battery Machine Use and Care**
- a. **Recharge only with the charger specified by the manufacturer.** A charger that is suitable for one type of battery pack may create a risk of fire when used with another battery pack.
 - b. **Use machines only with specifically designated battery packs.** Use of any other battery packs may create a risk of injury and fire.
 - c. **When battery pack is not in use, keep it away from other metal objects, like paper clips, coins, keys, nails, screws or other small metal objects, that can make a connection from one terminal to another.** Shorting the battery terminals together may cause burns or a fire.
 - d. **Under abusive conditions, liquid may be ejected from the battery; avoid contact.** If contact accidentally occurs, flush with water. If liquid contacts eyes, additionally seek medical help. Liquid ejected from the battery may cause irritation or burns.
 - e. **Do not use a battery pack or machine that is damaged or modified.** Damaged or modified batteries may exhibit unpredictable behavior resulting in fire, explosion or risk of injury.
 - f. **Do not expose a battery pack or machine to fire or excessive temperature.** Exposure to fire or temperature above 265 °F (130 °C) may cause explosion.
 - g. **Follow all charging instructions and do not charge the battery pack or machine outside the temperature range specified in the instructions.** Charging improperly or at temperatures outside the specified range may damage the battery and increase the risk of fire.
- 6. Service**
- a. **Have your machine serviced by a qualified repair person using only identical replacement parts.** This will ensure that the safety of the machine is maintained.
 - b. **Never service damaged battery packs.** Service of battery packs should only be performed by the manufacturer or authorized service providers.

BLOWER AND VACUUM SAFETY WARNINGS

- a. **Do not use the machine in bad weather conditions, especially when there is a risk of lightning.** This decreases the risk of being struck by lightning.
- b. **Check the debris collector frequently for wear or deterioration.** A worn or damaged debris collector may increase the risk of personal injury.
- c. **Wear eye protection and ear protection.** Adequate protective equipment will reduce

the risk of personal injury.

- d. **While operating the machine, always wear non-slip and protective footwear. Do not operate the machine when barefoot or wearing open sandals.** *This reduces the risk of injury to the feet.*
- e. **Do not wear loose fitting clothing or articles such as scarves, strings, chains, ties, etc., that could get drawn into the air inlets. Tie back or cover long hair to make sure it does not get drawn into the air inlets. If any of these items are drawn into the air inlets, it can increase the risk of personal injury.**
- f. **Keep bystanders away while operating the machine.** *Thrown debris can increase the risk of personal injury.*
- g. **Do not use in vacuum mode without the debris collector in place.** *Thrown objects can increase the risk of personal injury.*
- h. **Never point the blower nozzle in the direction of people or pets or in the direction of windows. Use extra caution when blowing debris near solid objects, such as trees, automobiles and walls that can cause debris to ricochet.** *Thrown objects can damage property and increase the risk of personal injury.*
- i. **Do not use the machine to pick up or blow anything that is burning or smoking, such as cigarettes, matches or hot ashes.** *These ignition sources may increase the risk of fire.*
- j. **Do not vacuum water or other liquids or immerse any part of the machine in liquid.** *Water entering the machine may increase the risk of electric shock.*
- k. **Do not vacuum stones, gravel, metal or broken glass.** *The fan wheel can get damaged and may increase the risk of personal injury.*
- l. **Do not touch the fan while still in motion. Turn off the machine, wait until the fan stops and unplug the machine, before removing any part that may give access to the fan.** *This reduces the risk of injury from moving parts.*
- m. **When clearing jammed material or servicing the machine, make sure the power switch is off and the power cord is disconnected.** *Unexpected actuation of the machine while clearing jammed material or servicing may increase the risk of personal injury.*

VIBRATION + NOISE REDUCTION

To reduce the impact of noise and vibration emission, limit the time of operation, use low-vibration and low-noise operating modes as well as wear personal protective equipment. Take the following points into account to minimise the vibration and noise exposure risks.

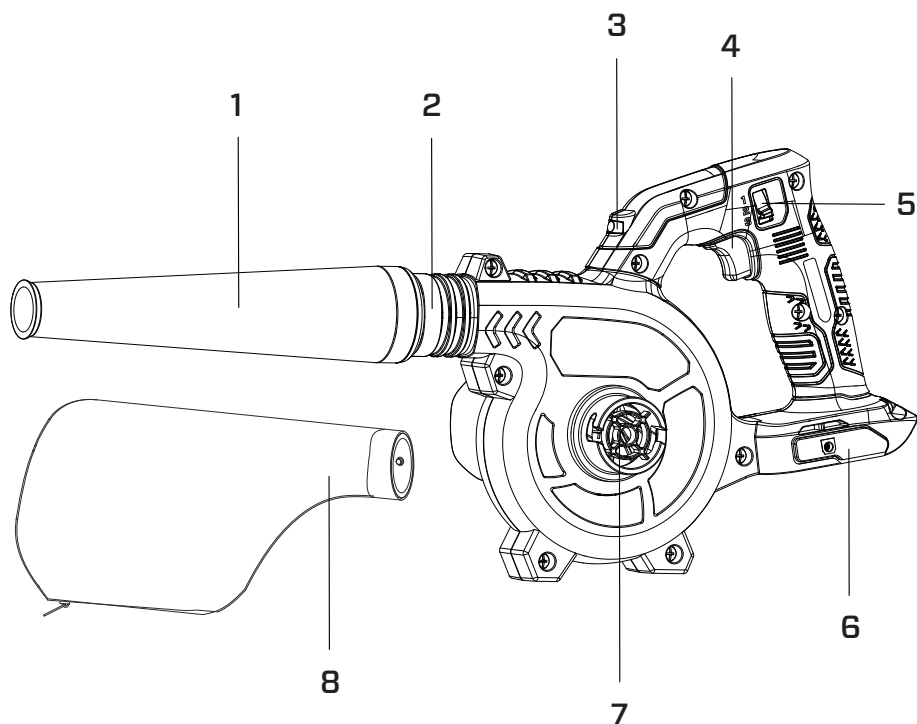
- Only use the product as intended by its design and these instructions.
- Ensure that the product is in good condition and well maintained.
- Use correct attachments for the product and ensure they are in good condition.
- Keep tight grip on the handles/grip surface.
- Maintain this product in accordance with these instructions and keep it well lubricated (where appropriate).
- Plan your work schedule to spread any high vibration tool use across a longer period of time.

SAVE THESE INSTRUCTIONS

INTENDED USE

This tool is intended for blowing garden waste and collecting light debris in domestic use. Do not use it for other purposes.

KNOW YOUR UNIT



APPLICATIONS

Model: BLVX2-M

- As a blower, used to blow leaves, garden waste such as grass, twigs and pine needles.
- As a vacuum, used to collect light debris, like leaves.

1	Blower/Vacuum Tube
2	Air Outlet Mounting Base
3	LED Light
4	Speed Control Switch

5	Trigger
6	Battery Pack Docking Port
7	Air Inlet Mounting Base
8	Debris Collector

SPECIFICATIONS

Model	BLVX2-M
Rated Voltage	18 V \approx (20 V \approx Max*)
Rated Output Power	300 W
Motor Type	Brushed
Max. No-load Speed	19000 RPM
Max. Air Speed	180 MPH
Max. Air Volume	75 CFM
Recommended Operating Temperature	5 °F-104 °F
Recommended Storage Temperature	-4 °F-158 °F
Machine Weight (Tool Only)	3.06 lbs

*20V Max battery, maximum initial battery voltage (measured without a workload) is 20V. The nominal voltage is 18V.



NOTE:

Only use following batteries: B20X2, B25X2, B40X2, B50X2, B60X2, B80X2 and chargers: CHX2-L1, CHX2, CHQX2, CHQX2-M, CHDX2-M.

ASSEMBLY

1. Unpack all parts and lay them on a flat, stable surface:
2. Remove all packing materials and shipping devices, if applicable.
3. The scope of delivery varies depending on the country and purchased variant.
 - Cordless Jobsite Blower/Vacuum x1
 - Blower/Vacuum Tube x1
 - Debris Collector x1
 - Instruction Manual x1
4. If you find that parts are missing or show damage do not use the product but contact your dealer. Using an incomplete or damaged product represents a hazard to people and property.
5. Ensure that you have all the accessories

and tools needed for assembly and operation. This also includes suitable personal protective equipment.



WARNING!



Wear protective gloves for this assembly work and always lay the product on a flat and stable surface while assembling.



Follow the assembly instructions step-by-step and use the pictures provided as a visual guide to easily assemble the product!

Do not connect to the power supply before the power tool is completely assembled or adjusted!

INSTALLING THE BLOWER/ VACUUM TUBE AND DEBRIS COLLECTOR



WARNING!

To avoid serious personal injury and damage to the unit, shut the unit off before removing or installing an attachment.



NOTE:

Take care of small parts that are removed during assembly or when making adjustments. Keep them secure to avoid loss.

TO ASSEMBLE THE TOOL AS A BLOWER:

1. Align and attach the blower tube to the air outlet mounting base.
2. Rotate clockwise for snapping the raised block of the blower tube into slot.

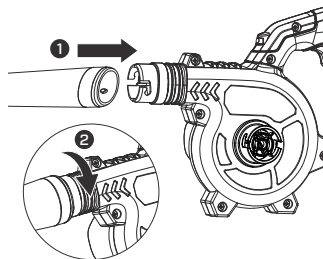


Fig. 1

TO ASSEMBLE THE TOOL AS A VACUUM:

1. Rotate counterclockwise and pull the blower tube out of the air outlet mounting base.
2. Align and attach the same tube to the air inlet mounting base on the side housing of the product.
3. Rotate clockwise to locate the raised block into slot.

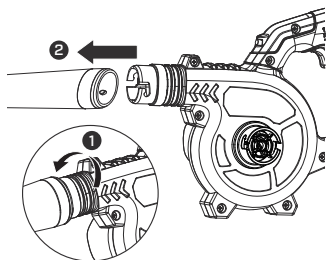


Fig. 2

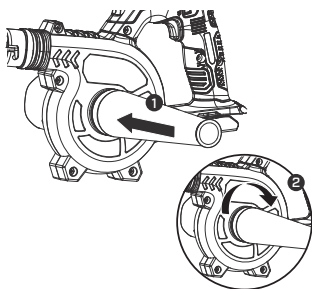


Fig. 3

4. Attach the debris collector to the air outlet mounting base. Make sure the inner raised block of debris collector holder is firmly in place as well.

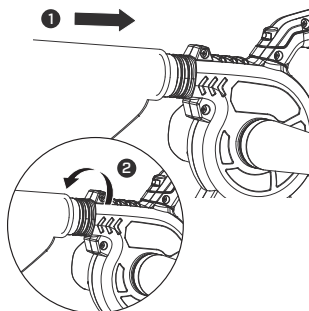


Fig. 4

INSTALLING/REMOVING THE BATTERY PACK

TO INSTALL:

Align and slide the battery pack into the docking port until it is locked in place.

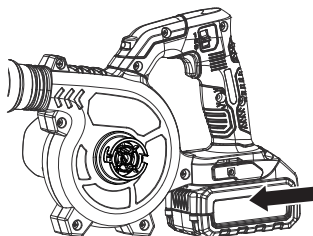


Fig. 5

TO REMOVE:

Press the release button on battery pack and remove the battery pack from the product.

OPERATION

! WARNING!

Inspect the tool for complete installation. Any missing, damaged or misplace may cause serious injury.

! WARNING!

To reduce the risk of injury to persons, do not operate without guards in place.

! WARNING!

Wear eye and ear protection at all times while operating the tool.

! WARNING!

Do not use the vacuum without debris collector in place.

! WARNING!

Do not pick up anything that is burning or smoking, such as cigarettes, matches, or hot ashes.

SWITCHING ON/OFF

1. Press the trigger to turn on the tool.
2. Release the trigger to turn off the tool.

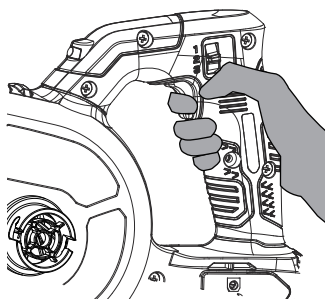


Fig. 6



NOTE:

The LED light will automatically turn on/off when the blower starts/stops.

ADJUSTING BLOWING SPEED

The blowing speed can be adjusted by speed control switch. Adjust to desired blower speed to meet your need.

OPERATION TIPS



WARNING!

To reduce the risk of hearing loss, hearing protection is required.

GENERAL TIPS

1. Double check that accessories or application tools are properly fixed.
2. Always hold the product on its handle. Keep the handle dry and clean to ensure safe support.
3. Ensure that the air vents are always unobstructed and clear. Clean them if necessary with a soft brush. Blocked air vents may lead to overheating and damage the product.
4. Switch the product off immediately if you are disturbed while working by other people entering the working area. Always let the product come to complete stop before putting it down.
5. Do not overwork yourself. Take regular breaks to ensure you can concentrate on the work and have full control over the product.
6. Before switching the product on, check

whether it has been assembled correctly and all the moving parts are running smoothly!

7. While working, ensure that the product does not strike hard objects, as this can cause damage.
8. Do not blow any solid bodies such as stones, branches, pieces of branch or similar.
9. We recommend slightly dampening surfaces in dusty conditions or using a moister attachment.

BLOWING

1. Before blowing, loosen leaves that are stuck to the ground using a broom or rake.
2. Hold the tube approximately 3.9 inch (10 cm) above the ground and walk slowly forward using a sweeping motion from side to side.
3. Direct the air stream away from yourself.
4. Ensure that you do not stir up any heavy objects and hurt somebody or damage something.



WARNING!

When the blower vibrates abnormally, immediately shut off the unit. Abnormal vibration often shows a mechanical problem and continues use could result in injury or property damage.

VACUUMING



NOTE:

Do not use vacuuming mode unless the debris collector is well installed.

1. Always hold the handle tightly to maintain good control of the machine during use.
2. Make sure the bag is properly installed and the zipper is closed.
3. When operating the unit as a blower, never point the blower tube in the direction of people or pets or in the direction of window. Use extra caution when blowing debris near solid objects, such as trees, automobiles, and walls.
4. As the bag fills, suction power will decrease. When this happens, turn off the product and remove the battery. Detach the debris collector and empty debris.
5. With a firm hold on the unit, tilt the blower tubes to collect light debris. The debris will flow into the bag. Items such as small

leaves and twigs will be mulched as they pass through the fan housing. For longer bag life and optimal performance, empty the bag frequently.

6. Do not wear loose clothing. Drawing into the air inlet or blocking the air vents both can cause serious accidents.



WARNING!

Never remove the collection bag without first turning off the product and remove the battery.

OVERHEAT PROTECTION

When the tool/battery is overheated, the tool stops automatically. In this situation, let the power tool/battery cool before turning the tool on again.

OVERDISCHARGE PROTECTION

When the battery capacity is not enough, the tool stops automatically. In this case, remove the battery from the tool and charge the battery.

MAINTENANCE



WARNING!

Always switch the product off, remove the battery pack and let the product cool down before performing cleaning and maintenance work!



WARNING!

Only perform cleaning and maintenance work according to these instructions! Any additional maintenance or repairs must be performed by a qualified specialist using genuine replacement parts. Unauthorized attachments may cause equipment damage or safety hazards.



WARNING!

Always wear protective gloves to reduce the risk of injury.

CLEANING

- Switch the product off and remove the battery pack from the product.

- Clean up debris from blower tube.
- Remove the collecting bag and empty it. Wash the bag if necessary.
- Remove wood chips and other debris from air vents.
- Use a small brush to clean the outside of the unit.
- Wipe off any moisture with a soft cloth. The tool should never come in contact with water.



NOTE:

Do not use strong detergents. Household cleaners that contain aromatic oils such as pine and lemon, and solvents such as kerosene, can damage plastics.

TRANSPORTATION

- Clean the unit as described above before transportation.
- Always carry the product by its handle.
- Secure the product to prevent it from slipping or falling over.
- Protect the product from any heavy impact or strong vibrations which may occur during transportation in vehicles.

STORAGE

- Clean the unit as described above before storing.
- Store the product and its accessories in a dark, dry, frostfree, well-ventilated place. The ideal storage temperature is between 50°F (10°C) and 86°F (30°C).
- Do not store the product under sunlight and accessible to children.
- Make sure the product is always protected from cold and humidity.
- Protect your unit from dust by a suitable cover.



NOTE:

To prolong battery life, never store battery pack in a completely discharged condition. Make sure the battery pack is charged once per year or when the LED indicator shows only one light.

DISPOSAL

Unwanted product should not be disposed of with household waste. Please recycle where

facilities exist. Check with your local authority or retailer for recycling advice. Users should clean up cut grass generated during operation to protect environment.



Electrical products should not be discarded with household products. Used electrical products must be collected separately and disposed of at collection points provided for this purpose. Talk with your local authorities or dealer for advice on recycling.

TROUBLESHOOTING

Suspected malfunctions are often due to causes that the users can fix themselves. Therefore, check the product using this section. In most cases the problem can be solved quickly.

PROBLEM	POSSIBLE CAUSE	SOLUTION
Product does not start	Battery pack not properly attached	Attach properly
	Battery pack capacity too low	Remove and charge battery pack
	Battery pack damaged	Check by a specialist electrician
Product does not reach full power	Battery pack capacity too low	Charge battery pack
	Air vents are blocked	Clean the air vents
Vibration or noise is excessive	Bolts/nuts are loose	Tighten bolts/nuts
Product suddenly stops	Battery pack capacity too low	Remove and charge battery pack
	Battery too hot	Remove battery pack and let it cool down

WARRANTY

SENIX TOOLS LIMITED WARRANTY

FOR FIVE YEARS from the date of original purchase this product is warranted against defects in material or workmanship. WITH PROOF OF ORIGINAL PURCHASE a defective product will receive free repair. If the product cannot be repaired it will be replaced free of charge.

For details to obtain warranty coverage, visit senixtools.com, email senix.support@yatusa.com or call **1-800-261-3981**.

- This warranty does not cover repairs necessary due to product accident or abuse, or failure to operate or maintain the product according to all supplied instructions.
- This warranty does not cover an included battery pack or charger, which offer three-year, replacement-only coverage. See battery pack or charger instruction manuals for complete warranty details.
- This warranty does not cover expendable items that can wear out from normal use within the warranty period, including but not limited to drill bits, cutting blades and trimmer spool or line.
- This warranty does not apply to damage resulting from repairs to the product made or attempted by other than SENIX authorized agents.
- This warranty does not cover the cost of mailing or transporting the power tool to receive warranty coverage.
- The warranty is void if the product has been used for commercial, professional, or rental service purposes.
- The warranty applies to the original retail purchaser and is not transferable.
- Proof of purchase is required to obtain warranty coverage.

THIS WARRANTY IS GIVEN IN LIEU OF ALL OTHERS, INCLUDING THE IMPLIED WARRANTY OF MERCHANTABILITY AND FITNESS FOR A PARTICULAR PURPOSE, AND EXCLUDES ALL INCIDENTAL OR CONSEQUENTIAL DAMAGE.

Some states do not allow limitations on how long an implied warranty lasts or the exclusion or limitation of incidental or consequential damages, so these limitations may not apply to you. This warranty gives you specific legal rights and you may have other rights which vary in certain states or provinces.

NOTE: Battery pack warranty voided if the battery pack is tampered with in any way. SENIX is not responsible for any injury caused by tampering and may prosecute warranty fraud to the fullest extent permitted by law.

60-DAY MONEY-BACK GUARANTEE. If for any reason within 60 days from the date of original purchase you are not completely satisfied with the performance of this SENIX product, you can return it with the original sales receipt for a full refund.

Latin America: This warranty does not apply to products sold in Latin America. For products sold in Latin America, see the country-specific warranty information contained in the packaging, call the retailer from which it was purchased, or visit the website for warranty information.

Free warning label replacement: If your warning labels become illegible or are missing, call **1-800-261-3981** for a free replacement.

REGISTER ONLINE - senixtools.com/pages/product-registration

Thank you for your purchase! Register your product now for:

Warranty Service: Registering your product will help you obtain more efficient warranty service in case of a problem with your product.

Confirmation of Ownership: In case of an insurance loss, such as fire, flood, or theft, your ownership registration will serve as proof of purchase.

For your safety: Registering your product will allow us to contact you in the unlikely event a safety notification is required under the Federal Consumer Safety Act.

