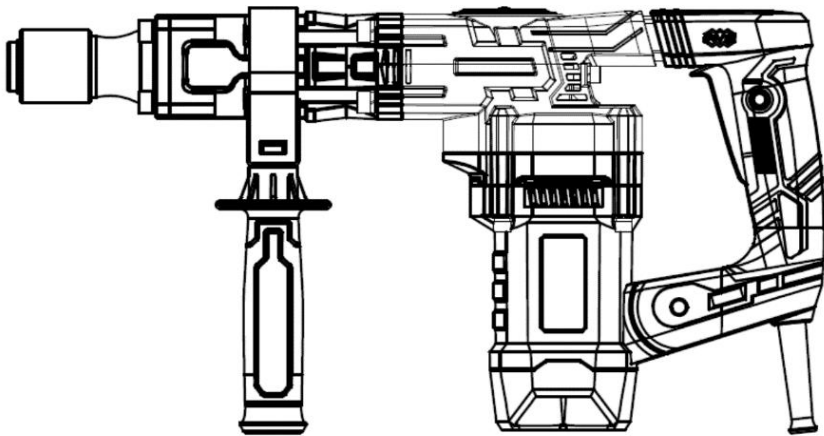










**เครื่องสับไฟฟ้า 6.8 กก. 1300 วัตต์**  
**1300W**  
**DEMOLITION HAMMER**  
**DHE13.0-M-EU**



For customer service please find all information on [www.yattool.com](http://www.yattool.com)  
CAUTION: BEFORE USING THIS PRODUCT, READ THIS MANUAL AND  
FOLLOW ALL ITS SAFETY RULES AND OPERATING INSTRUCTIONS.

ORIGINAL INSTRUCTIONS

<b>List of pictograms used.....</b>	<b>Page</b>	<b>2</b>
<b>Introduction.....</b>	<b>Page</b>	<b>2</b>
Intended use.....	Page	2
Description of parts.....	Page	2
Technical Data .....	Page	2
Scope of delivery.....	Page	3
 <b>General power tools safety warnings.....</b>	 <b>Page</b>	 <b>3</b>
<b>Installation.....</b>	<b>Page</b>	<b>5</b>
Additional handle .....	Page	5
Fitting a tool.....	Page	5
Removing a tool.....	Page	5
Adjusting the chisel position .....	Page	5
 <b>Start-up.....</b>	 <b>Page</b>	 <b>5</b>
Switching on and off.....	Page	5
 <b>Maintenance and cleaning.....</b>	 <b>Page</b>	 <b>6</b>
 <b>Disposal .....</b>	 <b>Page</b>	 <b>6</b>
 <b>Warranty.....</b>	 <b>Page</b>	 <b>6</b>

List of pictograms used			
	Read the instruction manual.		Wear eye protection.
	Wear hearing protection.		Wear protective, slip-resistant footwear.
	Wear a dust mask.		Wear protective gloves.

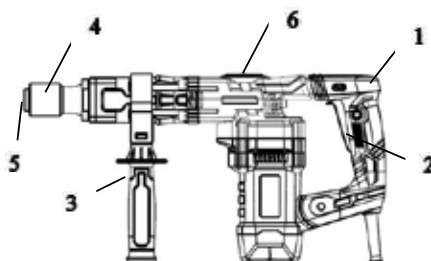
## Introduction

We congratulate you on the purchase of your new product. You have chosen a high quality product. The instructions for use are part of the product. They contain important information concerning safety, use and disposal. Before using the product, please familiarise yourself with all of the safety information and instructions for use. Only use the product as described and for the specified applications. If you pass the product on to anyone else, please ensure that you also pass on all the documentation with it.

## Intended use

This product is intended for use in demolition work and to break through concrete, stone or masonry. Other forms of use or changes to the product are deemed to be contrary to the intended use and may result in risks such as the danger of death, injuries and damage. The manufacturer assumes no liability for damages due to improper use. The product is not intended for commercial use or for any other use.

## Description of parts



1. Main handle
2. Power switch
3. Auxiliary handle
4. Locking pillar
5. SDS Hex chuck
6. Grease cap

## Technical Data

Rated power:	1300 W
Rated voltage:	220-240V~50-60Hz
Impact rating:	3900bpm
Impact joules:	20J
Tool fitting:	SDS HEX
Protection class:	II /(double shielded)



Guaranteed sound power level  
in dB

### Total vibration value:

Total vibration values (vector total of three directions)  
determined in accordance with EN 60745:

The vibration level specified in these instructions has been measured in accordance with a standardised measuring procedure and can be used to make product comparisons. The specified vibration emission value can also be used to make an initial exposure estimate.

### **WARNING!**

The vibration level varies in accordance with the use of the product and may be higher than the value specified in these instructions in some cases. Regular use of the product in such a way may cause the user to underestimate the vibration. Try to keep the vibration loads as low as possible. Measures to reduce the vibration load are, e.g. wearing gloves and limiting the working time. Wherein all states of operation must be included (e.g. times when the product is switched off and times where the product is switched on but running without load).

## Scope of delivery

1x demolition hammer  
1x Auxiliary handle (pre-assembled)  
1x flat chisel  
1x pointed chisel  
1x carrying case  
1x wrench  
1x set of instruction manual  
1x pair of carbon brushes

## General power tools safety warnings

### **WARNING!**

#### Read all safety directions and instructions.

Failure to follow the warnings and instructions may result in electric shock, fire and / or serious injury.

#### Save all warnings and instructions for future reference.

The term “power tool” in the warnings refers to your mains-operated (corded) power tool or battery-operated (cordless) power tool.

#### Work area safety

- a) **Keep work area clean and well lit.**  
Cluttered or dark areas invite accidents.
- b) **Do not operate power tools in explosive atmospheres, such as in the presence of flammable liquids, gases or dust.** Power tools create sparks which may ignite the dust or fumes.
- c) **Keep children and bystanders away while operating a power tool.** Distractions can cause you to lose control.

#### Electrical safety

- a) **Power tool plugs must match the outlet. Never modify the plug in any way. Do not use any adapter plugs with earthed (grounded) power tools.** Unmodified plugs and matching outlets will reduce risk of electric shock.
- b) **Avoid body contact with earthed or grounded surfaces, such as pipes, radiators, ranges and refrigerators.**  
There is an increased risk of electric shock if your body is earthed or grounded.
- c) **Do not expose power tools to rain or wet conditions.** Water entering a power tool will increase the risk of electric shock.
- d) **Do not abuse the cord. Never use the cord for carrying, pulling or unplugging the power tool. Keep cord away from heat, oil, sharp edges or moving**



**parts.** Damaged or entangled cords increase the risk of electric shock.

- e) **When operating a power tool outdoors, use an extension cord suitable for outdoor use.** Use of a cord suitable for outdoor use reduces the risk of electric shock.
- f) **If operating a power tool in a damp location is unavoidable, use a residual current device (RCD) protected supply.** Use of an RCD reduces the risk of electric shock.

#### **Personal safety**

- a) **Stay alert, watch what you are doing and use common sense when operating a power tool. Do not use a power tool while you are tired or under the influence of drugs, alcohol or medication.** A moment of inattention while operating power tools may result in serious personal injury.
- b) **Use personal protective equipment. Always wear eye protection.** Protective equipment such as dust mask, non-skid safety shoes, hard hat, or hearing protection used for appropriate conditions will reduce personal injuries.
- c) **Prevent unintentional starting. Ensure the switch is in the off-position before connecting to power source and / or battery pack, picking up or carrying the tool.** Carrying power tools with your finger on the switch or energising power tools that have the switch on invites accidents.
- d) **Remove any adjusting key or wrench before turning the power tool on.** A wrench or a key left attached to a rotating part of the power tool may result in personal injury.
- e) **Do not overreach. Keep proper footing and balance at all times.** This enables better control of the power tool in unexpected situations.
- f) **Dress properly. Do not wear loose clothing or jewellery. Keep your hair, clothing and gloves away from moving parts.** Loose clothes, jewellery or long hair can be caught in moving parts.
- g) **If devices are provided for the connection of dust extraction and collection**

**facilities, ensure these are connected and properly used.** Use of dust collection can reduce dust-related hazards.

#### **Power tool use and care**

- a) **Do not force the power tool. Use the correct power tool for your application.** The correct power tool will do the job better and safer at the rate for which it was designed.
- b) **Do not use the power tool if the switch does not turn it on and off.** Any power tool that cannot be controlled with the switch is dangerous and must be repaired.
- c) **Disconnect the plug from the power source and / or the battery pack from the power tool before making any adjustments, changing accessories, or storing power tools.** Such preventive safety measures reduce the risk of starting the power tool accidentally.
- d) **Store idle power tools out of the reach of children. Do not allow persons unfamiliar with the power tool or these instructions to operate the power tool.** Power tools are dangerous in the hands of untrained users.
- e) **Maintain power tools. Check for misalignment or binding of moving parts, breakage of parts and any other condition that may affect the power tool's operation. If damaged, have the power tool repaired before use.** Many accidents are caused by poorly maintained power tools.
- f) **Keep cutting tools sharp and clean.** Properly maintained cutting tools with sharp cutting edges are less likely to bind and are easier to control.
- g) **Use the power tool, accessories and tool bits etc. in accordance with these instructions, taking into account the working conditions and the work to be performed.** Use of the power tool for operations different from those intended could result in a hazardous situation.

### Service

- a) **Have your power tool serviced by a qualified repair person using only identical replacement parts.** This will ensure that the safety of the power tool is maintained.

### Hammer safety warnings

- a) **Wear ear protectors.** Exposure to noise can cause hearing loss.
- b) **Use auxiliary handle(s), if supplied with the tool.** Loss of control can cause personal injury.
- c) **Hold power tool by insulated gripping surfaces, when performing an operation where the cutting accessory may contact hidden wiring or its own cord.** Cutting accessory contacting a “live” wire may make exposed metal parts of the power tool “live” and could give the operator an electric shock.
- d) **Wear a dust mask.**

## Installation

### Additional handle

Loose the auxiliary an anti-clockwise way to adjust the side handle.

Swing the additional handle 3 around the product axis or 180 ° forward or backward into the desired position (see Fig.).

Retighten the handle an clockwise way.

**Note:** only use the tool with the additional handle 3 .

### Fitting a tool

Pull the locking sleeve 4 back.

Insert the tool by twisting it into the chuck system 5 until it clicks into place.

Release the locking sleeve 4 to lock the holder. Pull the tool to ensure that it is firmly locked in place. The tool has a radial clearance which is determined by the system.

## Removing a tool

Pull the tool's locking sleeve 4 back and pull the tool out from the SDS hex chuck system 5 .

## Adjusting the chisel position

Insert the flat chisel into the tool SDS Hex system 5 . Bring the flat chisel into the best possible working position.

## Start-up

### Switching on and off

When operating the device you can choose between intermittent or continuous operation mode.

#### Intermittent operation mode:

To switch on intermittent operation mode, hold the ON / OFF switch 2 .

To switch off intermittent operation mode, release the ON / OFF switch 2 .

#### Continuous operation mode:

To switch on continuous operation mode, press the ON / OFF switch 2 and lock this while pressed using the lock

To switch off continuous operation mode, press the ON / OFF switch 2 and release it once more.

You can use the chisel on concrete, brick, stone and asphalt as well as to remove tiles and flooring.

## Maintenance and cleaning



**WARNING!**

### **DANGER TO LIFE AND RISK OF**

**ACCIDENTS!** Switch the product off and remove the power plug before starting any work on the product.

The product must always be kept clean, dry and free from oil or grease.

Use a soft, dry cloth to clean the housing. Clean the tool holder regularly:

Before fitting a tool into the tool holder, grease it lightly.



**WARNING!**

If the replacement of the supply cord is necessary, this has to be done by the manufacturer or his agent in order to avoid a safety hazard.

## Disposal



The packaging is made entirely of recyclable materials, which you may dispose of at local recycling facilities.



Observe the marking of the packaging waste separation, which are marked with abbreviations.



The product and packaging materials are recyclable, dispose of it separately for better waste treatment. The Triman logo is valid in France only.



Contact your local refuse disposal authority for more details of how to dispose of your worn-out product.



To help protect the environment, please dispose of the product properly when it has reached the end of its useful life and not in the household waste.

Information on collection points and their opening hours can be obtained from your local authority.

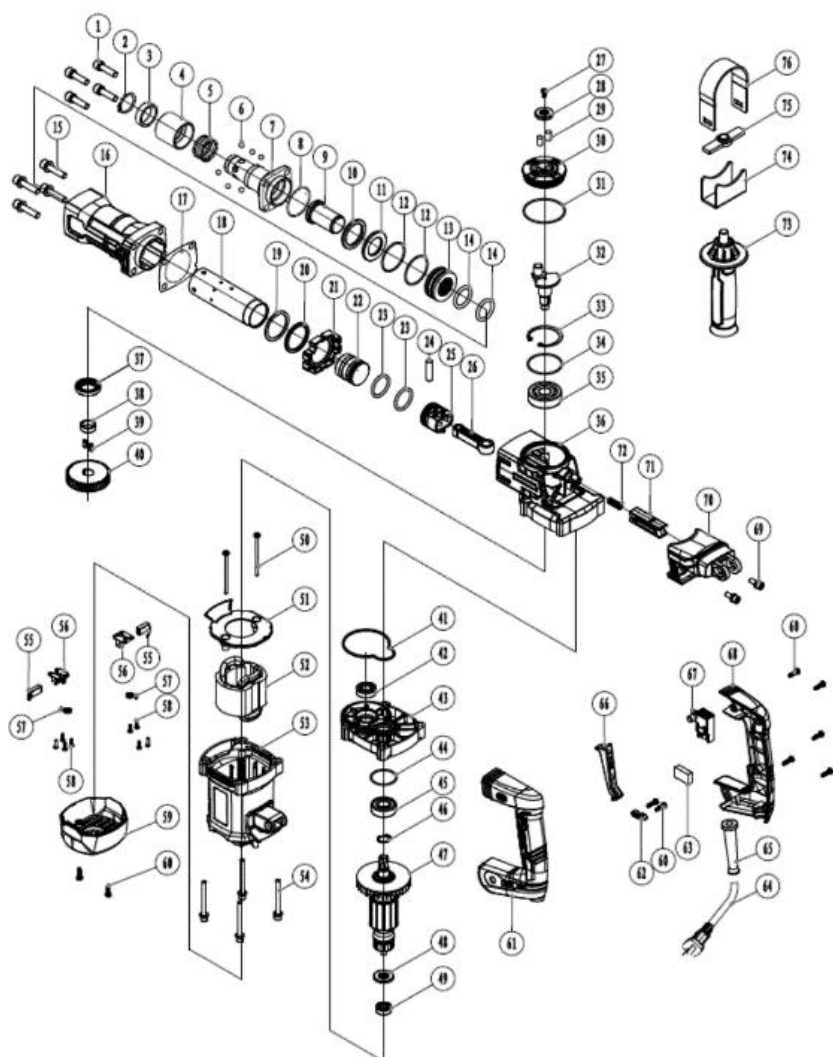
## Warranty

The product has been manufactured to strict quality guidelines and meticulously examined before delivery. In the event of product defects you have legal rights against the retailer of this product. Your legal rights are not limited in any way by our warranty detailed below.

The warranty for this product is 1 years from the date of purchase. Should this product show any fault in materials or manufacture within 1 years we will repair or replace it – at our choice – free of charge to you.

The warranty period begins on the date of purchase. Please keep the original sales receipt in a safe location. This document is required as your proof of purchase. This warranty becomes void if the product has been damaged, or used or maintained improperly.

The warranty applies to defects in material or manufacture. This warranty does not cover product parts subject to normal wear, thus possibly considered consumables (e.g. batteries) or for damage to fragile parts, e.g. switches, rechargeable batteries or glass parts.



Spare part list					
Part no.	Part description	usage	Part no.	Part description	usage
1	Screw M8X30	4	39	Flat key 4x12	2
2	Clip ring	1	40	Crankshaft gear	1
3	Stop collar	1	41	Seal ring	1
4	Fastening sleeve	1	42	Bearing 6001	1
5	Spring	1	43	Middle cover	1
6	Steel ball $\Phi 7.938$	6	44	O ring $\Phi 35 \times \Phi 1.8$	1
7	Bit holder	1	45	Bearing 6202	1
8	O ring $\Phi 44 \times \Phi 2$	1	46	Clip ring	1
9	Impact hammer	1	47	Rotor	1
10	Spacer	1	48	Clip ring	1
11	Shock pad	1	49	Bearing 608	1
12	O ring $\Phi 38 \times \Phi 2$	2	50	Screw ST4.2x65	2
13	Head of cylinder	1	51	Fan guide	1
14	O ring $\Phi 26.3 \times \Phi 4.3$	2	52	Stator	1
15	Screw M8X35	4	53	Housing of motor	1
16	Cylinder case	1	54	Screw M6x60	4
17	Paper washer	1	55	Carbon brush	2
18	Cylinder	1	56	Brush holder	2
19	Washer $\Phi 38.2 \times \Phi 46 \times 2$	1	57	Disc spring	2
20	Rectangular circle	1	58	Screw ST2.9x12	8
21	Cylinder limit sleeve	1	59	Rear cover of motor	1

22	Strike hammer	1	60	Screw KA40x16	9
23	O ring $\Phi 28.3 \times \Phi 3.5$	2	61	Left handle	1
24	Piston pin	1	62	Cable clamp	1
25	Piston	1	63	Capacitance	1
26	Connecting rod	1	64	Cable and plug	1
27	Screw ST4.2x12	1	65	Cable protector	1
28	Cover of oil box	1	66	Switch trigger	1
29	Pillar wool felt	2	67	Switch	1
30	Oil box	1	68	Right handle	1
31	O ring $\Phi 51 \times \Phi 2$	1	69	Screw M6x22	2
32	Crankshaft	1	70	Damping seat	1
33	Clip ring	1	71	Damping cap	1
34	O ring $\Phi 46 \times \Phi 2$	1	72	Damping spring	1
35	Bearing 6303	1	73	Auxiliary handle grip	1
36	Gear box	1	74	Handle holder	1
37	Seal ring	1	75	Brace	1
38	Distance ring	1	76	Band	1