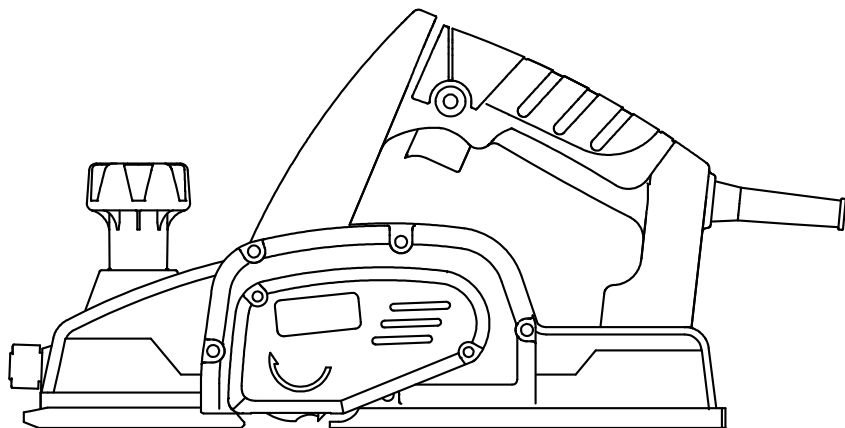




# นูลาไม **PLANER** **PPE6.0-M-EU**



SIAM GLOBAL HOUSE PUBLIC CO.,LTD  
232 MOO 19 TUMBON ROBMUANG AMPHUR MUANG ROI-ET,45000 THAILAND

## SPECIFICATIONS

Model	PPE6.0-M-EU
Planing width	82 mm
Planing depth	0-2mm
Power input	600W
No-load speed*	16300 rpm

\*Be sure to check the nameplate on product as it is subject to change by areas.

\*Due to our continuing programme of research and development, the specifications herein are subject to change without notice.

\*Class I tool needs to be effectively grounded.

## GENERAL SAFETY RULES

WARNING! Read all instructions. Failure to follow all instructions listed below may result in electric shock, fire and/or serious injury. The term "power tool" in all of the warnings listed below refers to your mains-operated (corded) power tool or battery-operated (cordless) power tool.

## SAVE THESE INSTRUCTIONS

### Work area safety

1. Keep work area clean and well lit.
2. Do not operate power tools in explosive atmospheres, such as in the presence of flammable liquids, gases or dust.
3. Keep children and bystanders away while operating a power tool.

### Electrical Safety

4. Power tool plugs must match the outlet. Never modify the plug in any way. Do not use any adapter plugs with earthed (grounded) power tools.
5. Avoid body contact with earthed or grounded surfaces such as pipes, radiators, ranges and refrigerators.
6. Do not expose power tools to rain or wet conditions.
7. Do not abuse the cord. Never use the cord for carrying, pulling or unplugging the power tool. Keep cord away from heat, oil, sharp edges or moving parts.
8. When operating a power tool outdoors, use an extension cord suitable for outdoor use.

## **Personal Safety**

9. Stay alert, watch what you are doing and use common sense when operating a power tool. Do not use a power tool while you are tired or under the influence of drugs, alcohol or medication.
10. Use safety equipment. Always wear eye protection.
11. Avoid accidental starting. Ensure the switch is in the off-position before plugging in.
12. Remove any adjusting key or wrench before turning the power tool on.
13. Do not overreach. Keep proper footing and balance at all times.
14. Dress properly. Do not wear loose clothing or jewellery. Keep your hair, clothing, and gloves away from moving parts.
15. If devices are provided for the connection of dust extraction and collection facilities, ensure these are connected and properly used.

## **Power tool use and care**

16. Do not force the power tool. Use the correct power tool for your application.
17. Do not use the power tool if the switch does not turn it on and off.
18. Disconnect the plug from the power source and/or the battery pack from the power tool before making any adjustments, changing accessories, or storing power tools.
19. Store idle power tools out of the reach of children and do not allow persons unfamiliar with the power tool or these instructions to operate the power tool.
20. Maintain power tools. Check for misalignment or binding of moving parts, breakage of parts and any other condition that may affect the power tools operation. If damaged, have the power tool repaired before use.
21. Keep cutting tools sharp and clean.
22. Use the power tool, accessories and tool bits etc. in accordance with these instructions and in the manner intended for the particular type of power tool, taking into account the working conditions and the work to be performed.

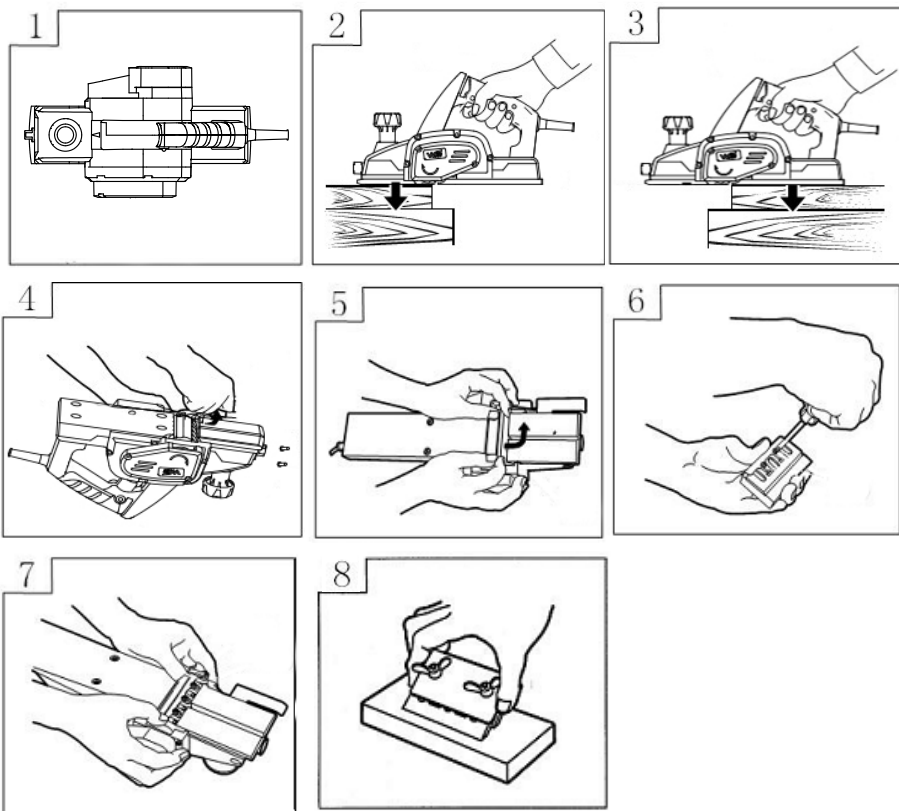
## **SERVICE**

23. Have your power tool serviced by a qualified repair person using only identical replacement parts.

## **SPECIFIC SAFETY RULES**

DO NOT let comfort or familiarity with product (gained from repeated use) replace strict adherence to planer safety rules. If you use this tool unsafely or incorrectly, you can suffer serious personal injury.

1. Wait for the cutter to stop before setting the tool down. An exposed cutter may engage the surface leading to possible loss of control and serious injury.
2. Use clamps or another practical way to secure and support the workpiece to a stable platform. Holding the work by hand or against your body leaves it unstable and may lead to loss of control.
3. Rags, cloth, cord, string and the like should never be left around the work area.
4. Avoid cutting nails. Inspect for and remove all nails from the workpiece before operation.
5. Use only sharp blades. Handle the blades very carefully.
6. Be sure the blade installation bolts are securely tightened before operation.
7. Hold the tool firmly with both hands.
8. Keep hands away from rotating parts.
9. Before using the tool on an actual workpiece, let it run for a while. Watch for vibration or wobbling that could indicate poor installation or a poorly balanced blade.
10. Make sure the blade is not contacting the workpiece before the switch is turned on.
11. Wait until the blade attains full speed before cutting.
12. Always switch off and wait for the blades to come to a complete stop before any adjusting.
13. Never stick your finger into the chip chute. Chute may jam when cutting damp wood. Clean out chips with a stick. Operate the tool only when hand-held.
15. Always change both blades or covers on the drum, otherwise the resulting imbalance will cause vibration and shorten tool life.
16. Use only Makita blades specified in this manual.
17. Always use the correct dust mask/respirator for the material and application you are working with.



### Standard accessories

1. Box Wrench(for securing cutter blade)
2. Guide
3. Blade Sharpening Ass'y(for Resharpenable Blade Type)

Standard accessories are subject to change without notice.

### 1. Turn the planing depth adjustment knob (12).

One revolution of the adjustment knob equals a 1 mm change in depth. One graduation corresponds to a depth of cut of 0.1 mm, and this is offered up to 2.0 mm in depth (Fig 1).

### 2. Switching ON and OFF

To run the tool, press the ON/OFF-switch (47). For continuous operation, press the lock-on button and release the ON/Off-switch. To stop the tool, release the ON/OFF-switch. To stop the tool in continuous operation, press the

ON/OFF-switch once more. Always switch OFF the tool when work is finished and before unplugging.

### 3. Planing (fig. 2 & 3)

- Switch the tool ON as described.
- Slowly move the Planer over the workpiece.
  - ⚠ The feed speed should not be too high, especially when using the maximum depth of cut and planing width.
  - Remember that several shallow cuts are better than one deep cut.
  - Switch the tool OFF.

### 4. Attaching and removing the parallel fence (fig. 4 & 5 & 6 )

The parallel fence (50) is used for optimum tool control on narrow workpieces.

- Slacken the wing parallel fence tightening bolt.
- Fit the parallel fence (50) in the hole from either side.
- Tighten the parallel fence tightening bolt.
- To remove the parallel fence, proceed in reverse order.

### 5. Removing cutters (fig. 4 & 5 & 6)

- Remove the three bolts (37) with the spanner (51) supplied.
- Flap the side guard (24) up.
- Remove drum cover (39) and remove the cutter (42) out of its holder.
- Place the cutter or replace it.
  - ⚠ Always replace both cutters.
- Replace the drum cover (39). Make sure that the cutter is flush with the planing shoe (49).
- Tighten the three bolts (37).

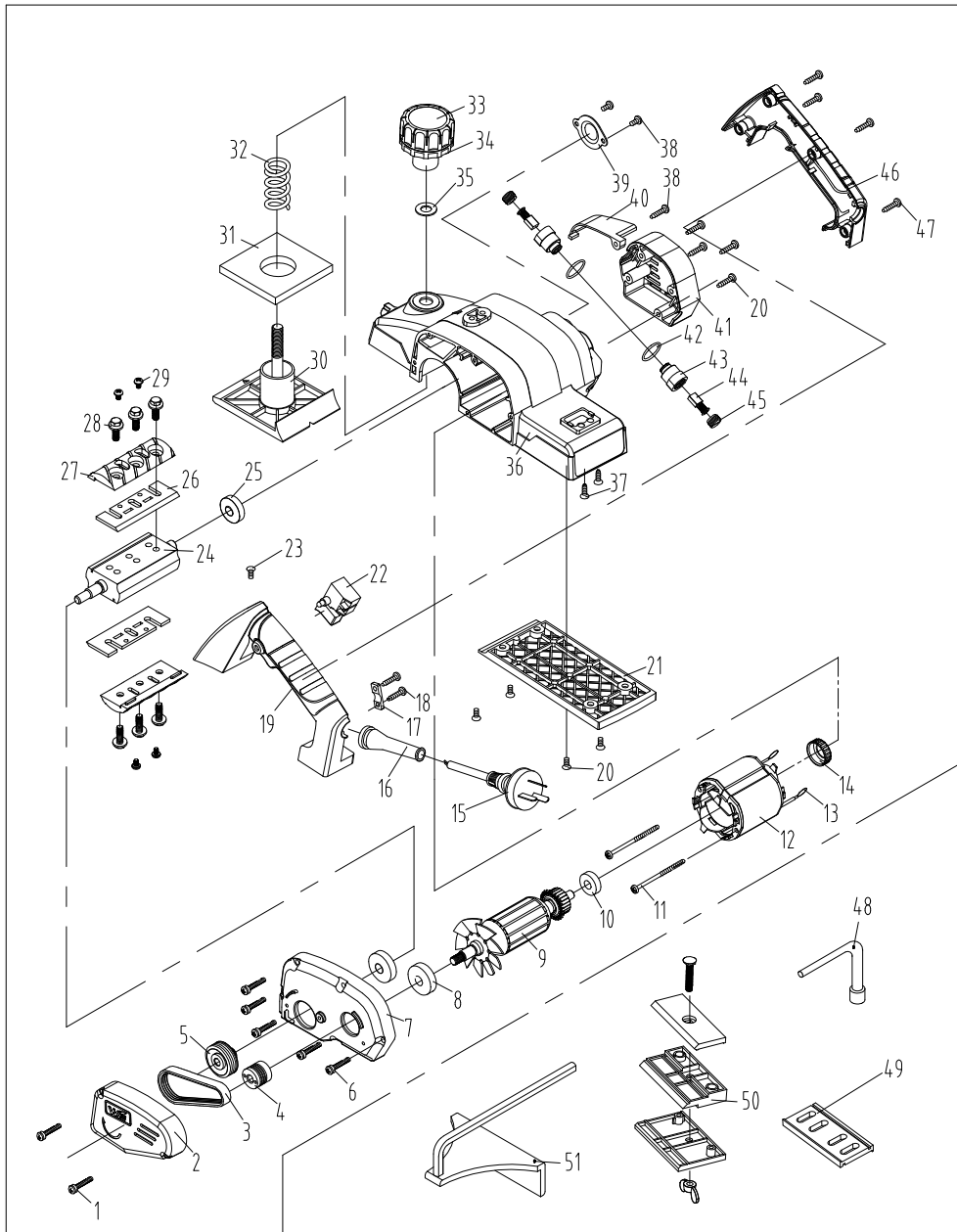
### 6. Adjusting cutters (fig. 7)

- Place the cutter (42) on the guage (53), and make the cutter edge perfectly flush with the inside edge of the guage (53).
- Place the bracket (41) on the cutter, and make the flange of bracket flush with the back side of the guage.
- Tighten the two screws (40) on the bracket.
- Slip the flange of the bracket into the groove of drum (43).
- Place the drum cover (39) and tighten the three bolts (37).

### 7. Sharpening cutters (fig. 8)

- Fasten the cutter to sharpening holder (52). Be sure both cutter edges face in the same direction.
- Place the cutter edges so that they rest flat on the grinding stone.
- Firmly grip the sharpening holder and move back and forward to sharpen the cutter (42).

## Assembly View



NO	DESCRIPTION	QTY	NO	DESCRIPTION	QTY
1	SCREW M4X22	2	27	DRUM PLATE	2
2	BELT COVER	1	28	FLANGE HEAD BOLT M6X18	6
3	BELT	1	29	SCREW WITH WASHER M4X8	4
4	SMALL V-PULLEY	1	30	FRONT BADE	1
5	BIG V-PULLEY	1	31	RUBBER PACKING	1
6	TAPPING SCREW M4X20	5	32	ADJUST PRING	1
7	BRACKET	1	33	KNOB COVER	1
8	BALL BEARING 6200RS	2	34	KNOB	1
9	ARMATURE	1	35	FLAT WASHER $\phi 10.3 \times \phi 20 \times 1.2$	1
10	BALL BEARING 608RS	1	36	MAIN HOUSING	1
11	PAN SCREW M4X65	2	37	SCREW ST4.8X14	2
12	FIELD COIL	1	38	SCREW M4X8	3
13	ROUND SPRING	2	39	BEARING COVER	1
14	BEARING BUSHING $\phi 25 \times \phi 22$	1	40	CLIP COVER	1
15	CORD	1	41	REAR COVER	1
16	CORD GUARD	1	42	INSULATION WASHER	2
17	TAPPING SCREW ST4.2X14	2	43	BRUSH HOLDER	2
18	STRAIN RELIEF	1	44	CARBON BRUSH	2
19	HANDLE	1	45	BRUSH HOLDER CAP	2
20	SCREW M4X10	8	46	HANDLE COVER	1
21	BASE	1	47	SCREW ST4.2X18	4
22	SWITCH	1	48	SOCKET WRENCH	1
23	SCREW M5X14	2	49	BALDE GUAGE	1
24	DRUM BODY	1	50	SHARPENING HOLDER	1
25	BALL BEARING 6000RS	1	51	GUIDE RULE	1
26	BLADE	2			