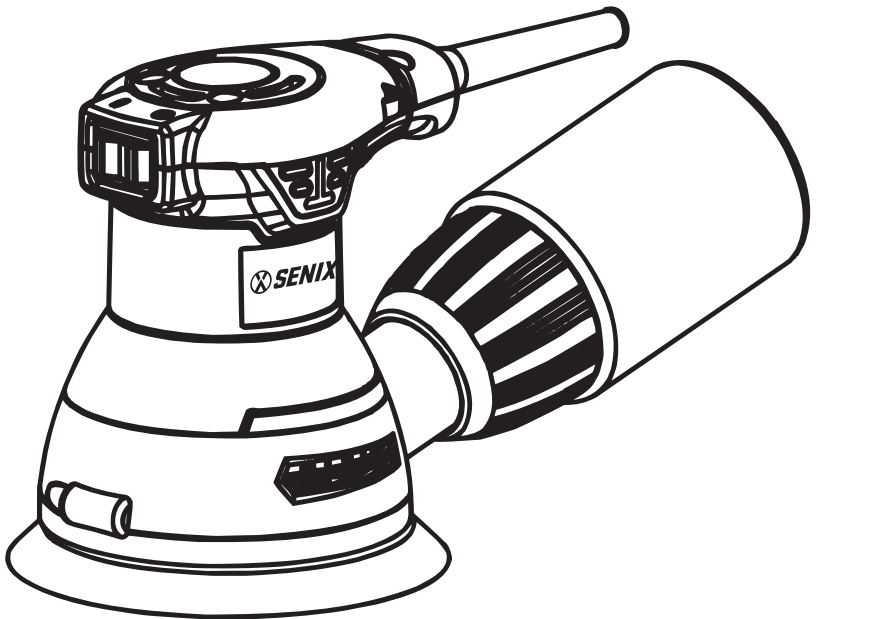




เครื่องขัดกระดาษทรายกลม 350 วัตต์

ORBITAL SANDER

PSE3.5-M-EU



SIAM GLOBAL HOUSE PUBLIC CO.,LTD
232 MOO 19 TUMBON ROB MUANG AMPHUR MUANG ROI-ET,45000 THAILAND

TABLE OF CONTENTS

Safety Rules	3
Product Description	5
Exploded Diagrams	7
Part List	8

GENERAL POWER TOOL SAFETY

⚠ WARNING Read all safety warnings and all instructions. Failure to follow the warnings and instructions may result in electric shock, fire and/or serious injury.

SAVE ALL WARNINGS AND INSTRUCTIONS FOR FUTURE REFERENCE.

The term "power tool" in the warnings refers to your mains-operated (corded) power tool or battery-operated (cordless) power tool.

WORK AREA SAFETY

1. Keep work area clean and well lit. Cluttered or dark areas invite accidents.
2. Do not operate power tools in explosive atmospheres, such as in the presence of flammable liquids, gases or dust. Power tools create sparks which may ignite the dust or fumes.
3. Keep children and bystanders away while operating a power tool. Distractions can cause you to lose control.

ELECTRICAL SAFETY

4. Power tool plugs must match the outlet. Never modify the plug in any way. Do not use any adapter plugs with earthed (grounded) power tools. Unmodified plugs and matching outlets will reduce risk of electric shock.
5. Avoid body contact with earthed or grounded surfaces such as pipes, radiators, ranges and refrigerators. There is an increased risk of electric shock if your body is earthed or grounded.
6. Do not expose power tools to rain or wet conditions. Water entering a power tool will increase the risk of electric shock.
7. Do not abuse the cord. Never use the cord for carrying, pulling or unplugging the power tool. Keep cord away from heat, oil, sharp edges or moving parts. Damaged or entangled cords increase the risk of electric shock.
8. When operating a power tool outdoors, use an extension cord suitable for outdoor use. Use of a cord suitable for outdoor use reduces the risk of electric shock.
9. If operating a power tool in a damp location is unavoidable, use a ground fault circuit interrupter (GFCI) protected supply. Use of an GFCI reduces the risk of electric shock.
10. Stay alert, watch what you are doing and

PERSONAL SAFETY

10. Stay alert, watch what you are doing and

18. Do not use the power tool if the switch does not turn it on and off. Any power tool that cannot be controlled with the switch is dangerous and must be repaired.
19. Disconnect the plug from the power source and/or the battery pack from the power tool before making any adjustments, changing accessories, or storing power tools.

Such preventive safety measures reduce the risk of starting the power tool accidentally.

20. Store idle power tools out of the reach of children and do not allow persons unfamiliar with the power tool or these instructions to operate the power tool. Power tools are dangerous in the hands of untrained users.
21. Maintain power tools. Check for misalignment or binding of moving parts, breakage of parts and any other condition that may affect the power tool's operation. If damaged, have the power tool repaired before use. Many accidents are caused by poorly maintained power tools.

22. Keep cutting tools sharp and clean. Properly maintained cutting tools with sharp cutting edges are less likely to bind and are easier to control.

23. Use the power tool, accessories and tool bits etc. in accordance with these instructions, taking into account the working conditions and the work to be performed. Use of the power tool for operations different from those intended could result in a hazardous situation.

24. Have your power tool serviced by a qualified repair person using only identical replacement parts. This will ensure that the safety of the power tool is maintained.
25. Follow instruction for lubricating and changing accessories.
26. Keep handles dry, clean and free from oil and grease.

27. Use proper extension cord. Make sure your extension cord is in good condition. When using an extension cord, be sure to use one heavy enough to carry the current your product will draw. An undersized cord will cause a drop in line voltage resulting in loss of power and overheating.

28. Do not overreach. Keep proper footing and balance at all times. This enables better control of the power tool in unexpected situations.
29. Dress properly. Do not wear loose clothing or jewellery. Keep your hair, clothing, and gloves away from moving parts. Loose clothes, jewellery or long hair can be caught in moving parts.

30. If devices are provided for the connection of dust extraction and collection facilities, ensure these are connected and properly used. Use of dust collection can reduce dust-related hazards.

POWER TOOL USE AND CARE

31. Do not force the power tool. Use the correct power tool for your application. The correct power tool will do the job better and safer at the rate for which it was designed.

SANDER SAFETY WARNINGS

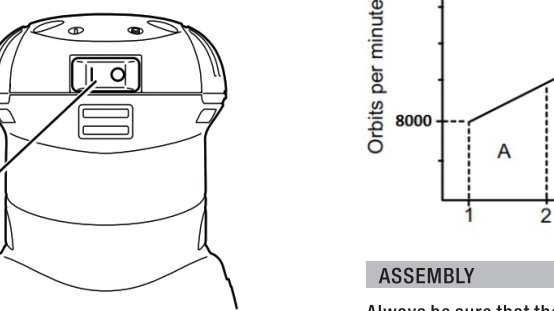
- 1) Always use safety glasses or goggles. Ordinary eye or sunglasses are NOT safety glasses.
- 2) Hold the tool firmly.
- 3) Do not leave the tool running. Operate the tool only when handheld.
- 4) This tool has not been waterproofed, so do not use water on the workpiece surface.
- 5) Ventilate your work area adequately when you perform sanding operations.
- 6) Some material contains chemicals which may be toxic. Take caution to prevent dust inhalation and skin contact. Follow material supplier safety data.
- 7) Use of this tool to sand some products, paints and wood could expose user to dust containing hazardous substances. Use appropriate respiratory protection.
- 8) Be sure that there are no cracks or breakage on the pad before use. Cracks or breakage may cause a personal injury.

FUNCTIONAL DESCRIPTION

⚠ CAUTION Always be sure that the tool is switched off and unplugged before adjusting or checking function on the tool.

Switch action

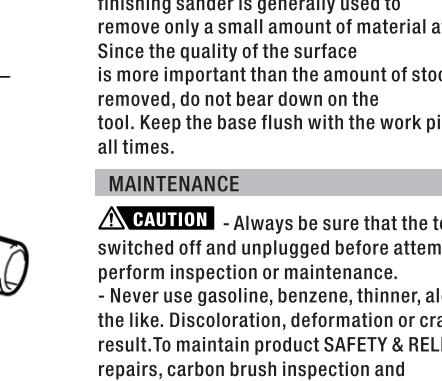
To start the tool, press the "I" side of the switch. To stop the tool, press the "O" side of the switch.



ASSEMBLY

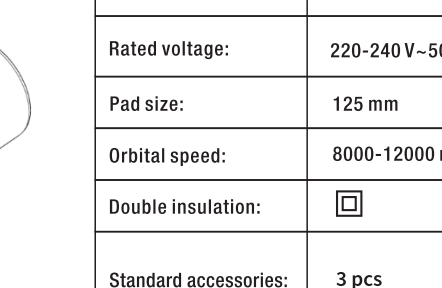
Always be sure that the tool is switched off and unplugged before carrying out any work on the tool. Installing or removing abrasive paper. To install the abrasive disc, first remove all dirt or foreign matter from the pad. Then peel off the backing paper from the abrasive disc and attach

the abrasive disc to the pad. Be careful to align the holes in the abrasive disc with those in the pad.



INSTALLING DUST BAG

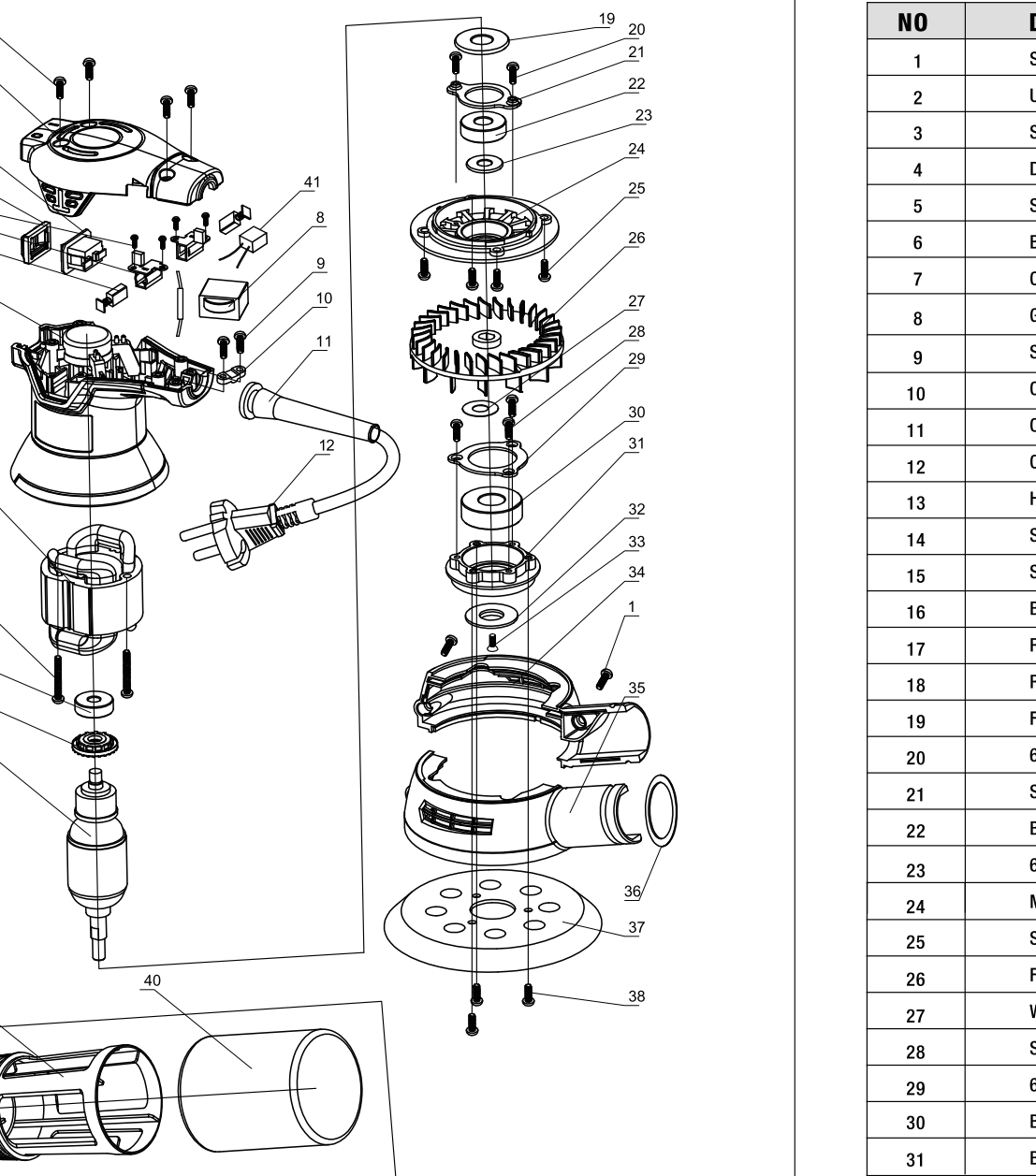
Install the dust bag on the tool, in way that it completely fits on the dust nozzle of the tool. When the dust bag is about half full, switch off and unplug the tool. Remove the dust bag from the tool. Then remove the dust nozzle from the dust bag after unlocking the dust nozzle by turning it slightly counterclockwise. Empty the dust bag by tapping it lightly



OPERATION

Sanding operation

⚠ CAUTION - Never run the tool without the abrasive paper. You may seriously damage the pad.
- Never force the tool. Excessive pressure may decrease the sanding efficiency, damage the abrasive paper and/or shorten tool life.



NO	DESCRIPTION	QTY
1	Screw ST4X14	6
2	Up cover	1
3	Switch	1
4	Dust cover	1
5	Screw ST3X8	4
6	Brush holder	2
7	Carbon Brush	2
8	Governor	1
9	Screw ST4X12	2
10	Cord clamp	1
11	Cord protector	1
12	Cord and plug	1
13	Housing	1
14	Stator	1
15	Screw ST4.2X40	2
16	Bearing 627	1
17	Rear dust sleeve	1
18	Rotor	1
19	Front dust sleeve	1
20	629 Bearing cover	1
21	Screw ST3X10	2
22	Bearing 629	1
23	629 Bearing washer	1
24	Middle cover	1
25	Screw ST4X16	4
26	Fan	1
27	Washer	2
28	Screw M4X12	3
29	6202 Bearing cover	1
30	Bearing 6202	1
31	Bearing pedestal	1

NO	DESCRIPTION	QTY
32	Bearing washer	1
33	Screw M4X16	1
34	Shield	1
35	Shield cover	1
36	Seal ring	1
37	Base	1
38	Screw M4X12	3
39	Dust collecting rack	1
40	Dust collection bag	1
41	Capacitor	1
42	Inductor	2