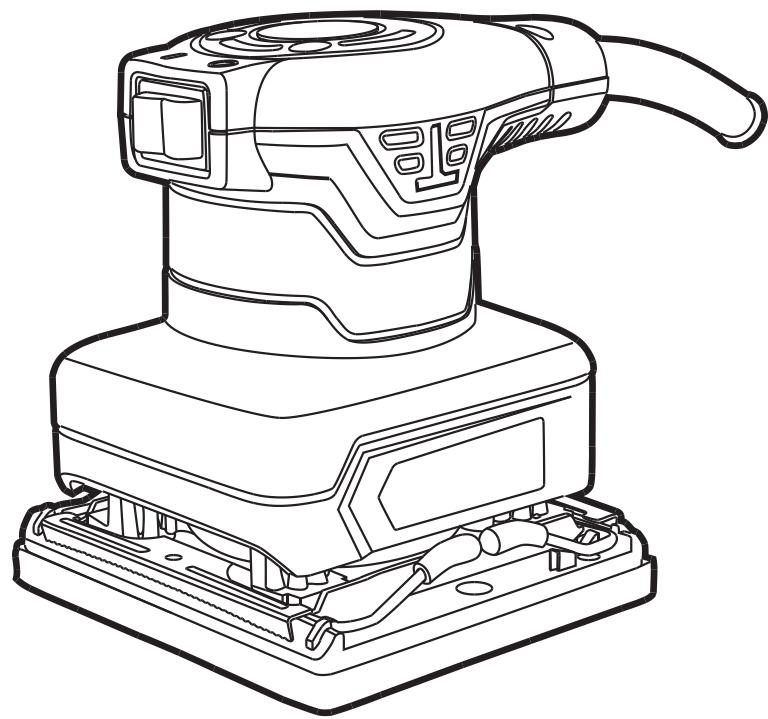




# เครื่องขัดกระดาษทราย 240 วัตต์ SHEET SANDER 240W PSE2.4-M-EU



SIAM GLOBAL HOUSE PUBLIC CO.,LTD  
232 MOO 19 TUMBON ROBMUANG AMPHUR MUANG ROI-ET,45000 THAILAND

WARNING! WHEN USING ELECTRIC TOOLS, ALL THE SAFETY INSTRUCTIONS SHOULD ALWAYS BE OBSERVED TO REDUCE THE RISK OF FIRE, ELECTRIC SHOCK AND PERSONAL INJURY BEFORE ATTEMPTING TO OPERATE THE TOOL, PLEASE READ ALL THE INSTRUCTIONS AND SAVE IT FOR FURTHER REFERENCE.

### BASIC SAFETY PRECAUTIONS FOR ALL ELECTRIC TOOLS

- 1. Keep work area clean**  
---Cluttered area and benches invite injuries.
- 2. Consider work area environment**  
---Don't use electric tools in damp or wet locations. Don't expose electric tools to rain. Keep work area well-lit. In particular, no inflammable liquids or gases must be present.
- 3. Avoid electric shock**  
---When you are operating tools, don't touch metal being grounded, such as pipe, radiator, freezer, etc.
- 4. Keep children and visitors away**  
---Don't let children contact tool or extension cord. All visitors should be kept away from work place.
- 5. Store idle tool**  
---When not in use, tools should be stored in dry, high, or locked-up place.
- 6. Don't force tool**  
---It will do the job better and safer at the rate for which it was intended, Avoid unnecessary overload which may put the operator at risk and impair functions of the tools.
- 7. Use right tool**  
---Don't force small tools and attachment to do the job of a heavy duty tool. Don't use tools for purpose not intended, for example, don't use electric circular saw for cutting logs or tree limbs.
- 8. Dress properly**  
---Don't wear loose clothes or jewelry. They can be caught in moving parts. Rubber gloves and non-skid footwear are recommended when working outdoors. Wear protective hair covering to contain long hair.
- 9. Use safety goggles**  
---Always wear safety goggles. If dust is produced, use the special masks.
- 10. Don't abuse cables**  
---Never carry tool by cable or yank it to disconnect it from socket. Keep cable from heat, oil and sharp edges.
- 11. Don't overreach**  
---Keep proper footing and balance at all times.
- 12. Maintain tools with care**  
---Keep tools sharp and clean for better and safer performance. Follow instructions for lubricating and changing accessories .Inspect tool cords periodically and replace if damaged. Keep handles dry, clean and free from oil and grease.

2

- 13. Disconnect tools**  
---When not in use, before servicing, and when changing accessories such as blades, bits and cutters.
- 14. Remove adjusting keys and wrenches**  
---From the habit of checking to see that keys and adjusting wrenches are removed from tool before turning it on.
- 15. Avoid unintentional starting**  
---Don't carry plugged-in tool with finger on switch. Make sure switch is off when connecting the plug to the socket.
- 16. Use extension cord**  
---If an extension cord is required, always check that its cross-section measurement is equal to or greater than that of the tool capabilities and so marked.
- 17. Stay alert**  
---Watch what you are doing. Use common sense. Do not operate tool when you are tired.
- 18. Check damaged parts**  
---Before further use of the tool, a guard or other parts that is damaged should be carefully checked to determine that it will operate properly and perform its intended function. Check for alignment of moving parts, binding of moving parts, breakage of parts, mounting and any other condition that may affect its operations. A guard or other part that is damaged should be properly repaired or replaced by a qualified service center unless otherwise indicated elsewhere in the instruction manual. Have defective switches replaced by a qualified service center. Do not use tool if switch does not turn on and off.
- 19. Check the voltage**  
---Do not plug the electric tool into the mains until you have checked that the voltage shown on the data plate corresponds to the voltage available.
- 20. Replace parts**  
---The use of improper accessory or attachment other than recommended present a risk of personal injuries.
- 21. Have your tool repaired by an expert**  
---This electric tool is in accordance with the relevant safety regulations. Repairing of electric tool may be carried out only by expert. Otherwise, it may cause considerable danger of the user.

3

### ELECTRIC SANDER USE

This sander is intended for the sanding of the surface on objects like wood, plastic, metal parts and also the surface of painted objects.

### ADDITIONAL SAFETY REGULATIONS

1. Hold the sander tightly when working, especially when tool start running.
2. Only lay down the sander when it stops working. The tools could only work when holding.
3. This sander is not a water-proof tool. Do not use the machine on surface with water.
4. Please keep the work area clean and well condition. Some working objects contents toxic material. Please pay attention to not breathe in or touch on skin the safety instruction when working. So accordingly, please take mask or respirator.
5. Please use a 15mA breaker to protect the user when in wet or narrow working place.

### Technical Specification

SHEET SANDER	
Voltage	220-240V
Frequency	50/60Hz
Rated Power	240W
No-load Speed	14500rpm
Base Size	110X100mm

4

### OPERATION REGULATIONS

- 1) Assemble and disassemble the sanding paper**  
Pull out the paper clamp, put one end of the sanding paper into paper clamp. Make the sanding fit well onto the clamp and base plate. Then press the paper clamp back and fit well.

Use the same way to fix the other end of the sanding paper.  
Please make sure the sanding paper should fits well onto the tool and equal tensility.  
(see figure 1.)

**Note: Please make sure the sanding paper should be clamped well; otherwise it will become loose and cause bad sanding precision.**

- 2) Switch on and off**  
Push the switch button to" ON" position, the tool start running. Push the switch button to "OFF" position, he tool stops.  
(see figure 2.)

- 3) Effective operation**  
Please hold the tool tight, turn on the switch. When the tool achieves its full speed, put it onto the surface of working object. Because the sander is design of the fine processing, so please do not put much force onto the tool. Press the tool only lightly when working. Please keep the tool base plate and working surface fit well. Too much force used will cause the damage of sanding paper and shorten the life time of tool.  
(see figure 3.)

5

### SERVICE AND MAINTENANCE

- 1)Always disconnect the tool before carrying out inspection or cleaning. Never use water or other liquids to clean the tool. Clean the tool by brushing it with a brush.
- 2)The air-vent of the tool should be cleaned regularly to avoid the motor too hot due to air-vent blocked.
- 3)Always check if the components of the tool are fixed well.
- 4)The housing should be without trace of crack or damage.
- 5)Always check if the cable is without damage

- ◆**Replacing the carbon brushes**
- a) Replacing the carbon brushes, when the tool couldn't run or too much sparkle.
  - b) Carbon brushes which are worn out (burned, broken or shorter than 5mm) have to be replaced by new ones.
  - c) Always replace both carbon brushes at the same time and use the brush by original manufacturer..
  - d) Because the carbon brush is internal, so please change the brushes by our maintenance service center.
  - e) After placing the new carbon brushes, let the tool run for some minutes so that the brushes fit better.

### WARRANTEE

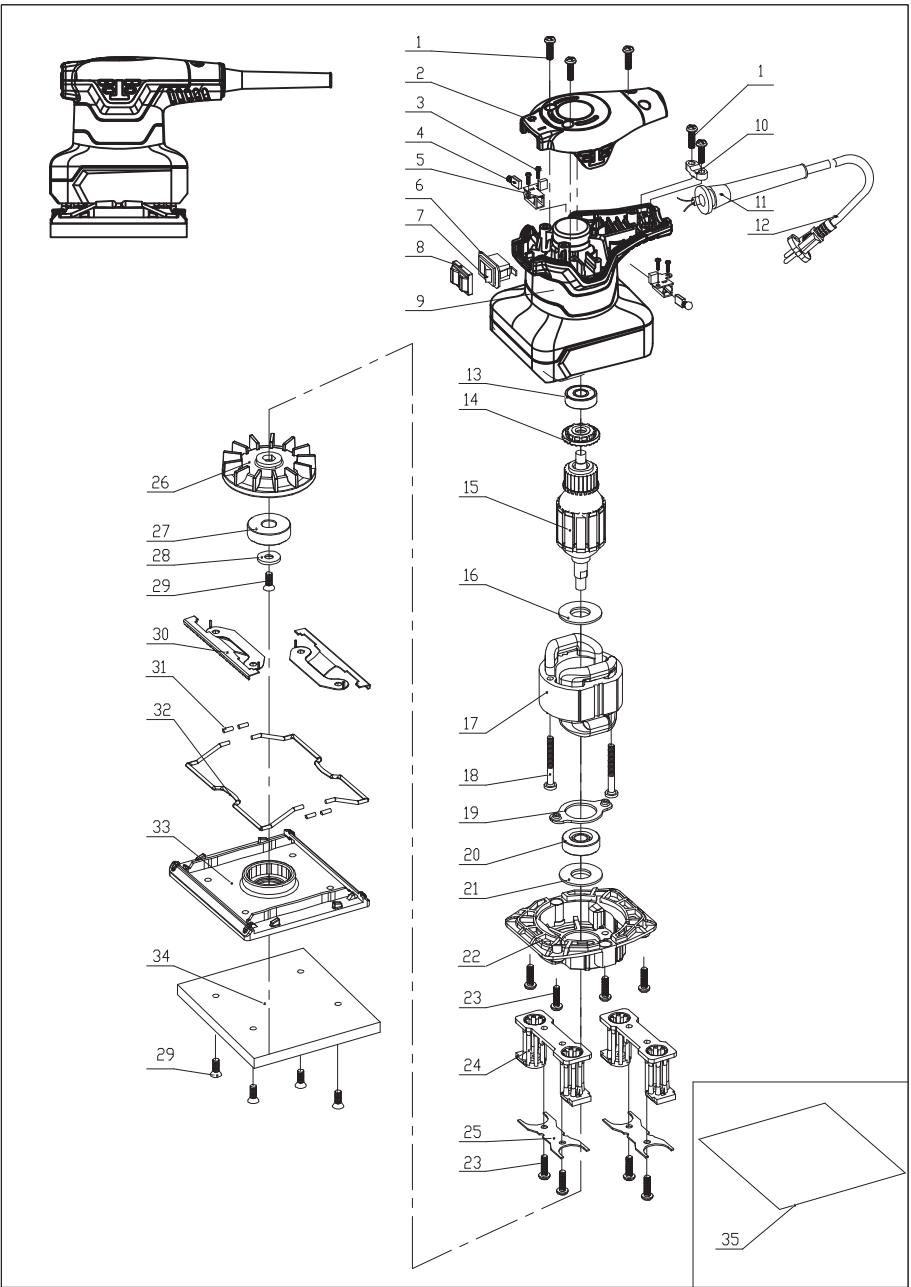
- ◆ All the tools we produce are with the guarantee by our company.
- ◆ Damages that are attributable to improper handling, overloading, or natural wear and tear are excluded from the guarantee.
- ◆ The prerequisite is that the tool is handed over assembled, and completed with the proof of sale and guarantee. Don't disassemble the tool.
- ◆ For guarantee claim, only use the original packaging.

### REPAIRS

Please only use accessories and spare parts recommended by the manufacturer. If the tool get malfunction, please hand over the tool to our dealer or appointed maintenance station. Don't disassemble the tool by yourself or replace the parts supplied by other factories.

6

### PALM SANDER EXPLODED VIEW



7

### PALM SANDER PARTS LIST

NO.	DESCRIPTION	QTY	NO.	DESCRIPTION	QTY
1	Screw ST4.2×14-F	5	27	Bearing 6200RS	1
2	Upper cover	1	28	Bearing washer	1
3	Screw ST3×8	2	29	Screw M4X12	5
4	Carbon brush	2	30	Teeth paper clamp	2
5	Brush holder	2	31	Clamp tube	4
6	Switch plate	1	32	Steelwire clip	2
7	Switch	1	33	Base plate	1
8	Dust sleeve	1	34	Sponge cushion	1
9	Housing	1	35	Sanding paper	1
10	Cable clamp	1			
11	Cable protector	1			
12	Cable	1			
13	Bearing 627RS	1			
14	Rear dust sleeve	1			
15	Rotor	1			
16	Front dust sleeve	1			
17	Stator	1			
18	Screw ST4.2×35-F	2			
19	Bearing cover	1			
20	Bearing 629RS	1			
21	Washer Φ20.5xΦ9x0.25	1			
22	Middle cover	1			
23	Screw M4X10	8			
24	Bracket	2			
25	Bracket support	2			
26	Fan	1			

8