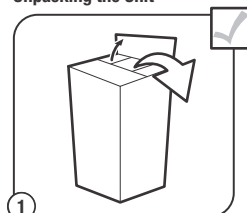


QUICK START GUIDE



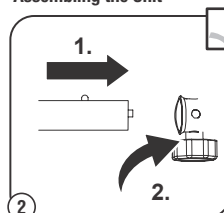
MODEL No. GTS4QL-L-EU

Unpacking the Unit

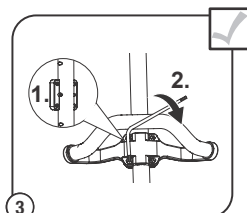


1 Remove all contents from the carton.

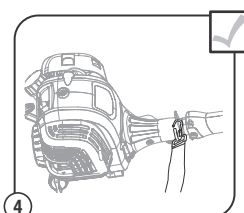
Assembling the Unit



2 Turn knob counterclockwise to loosen the coupler and remove the end cap from the attachment (1). Insert while rotating the lower shaft into the coupler until button locks in positioning hole. Turn the knob clockwise to tighten the coupler.



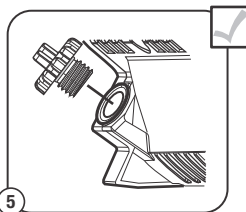
3 Select one of three handle positions based on operator height. Screw the handle and holder together using screwdriver. Tighten until secure.



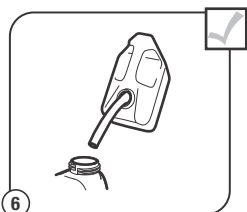
4 The harness with quick release function can be hooked behind the rear hand grip if needed.

Oil and Fuel

NOTICE: The trimmer is shipped without oil in the crankcase. Oil must be added before starting.

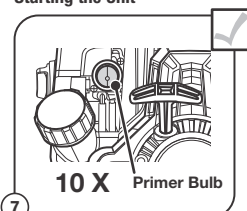


5 Set the unit on a flat, level surface. Unscrew the oil fill plug. Pour the entire container of oil into the oil fill hole. Reinstall the oil fill plug. **NOTE: DO NOT** overfill. Never add oil to the fuel tank. **DO NOT** mix oil with gasoline.

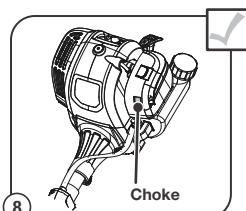


6 Place the unit on a level surface. Remove the fuel cap. Fill the fuel tank. Replace the fuel cap. Move the unit at least 9.1 m (30 ft) from the fuel container and the fueling site before starting the engine. **NOTE: Use fresh unleaded gasoline (less than 30 days old).**

Starting the Unit



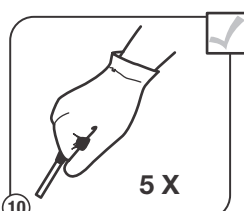
7 **10 X** Primer Bulb Press the primer bulb 10 times.



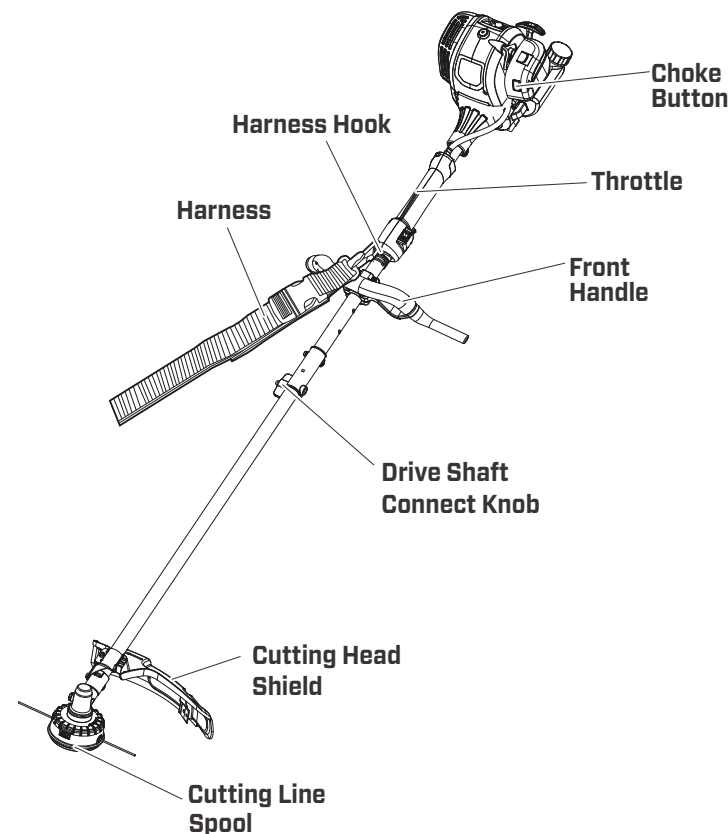
8 Choke Push the choke button in until it clicks.



9 Crouch in the starting position.



10 **5 X** Pull the starter rope with a controlled and steady motion 5 times to start the engine. Allow to warm up 30 to 60 seconds before increasing speed.



STILL DIDNT START?

Follow these next steps below, also found on p. 9 in your product

- Release choke by squeezing throttle trigger and the orange choke button pops out.
- Engine is now in the run position
- Rapidly pull starter rope until the engine starts.
- Allow the engine to run for 30 seconds, then squeeze the throttle to provide fuel to the engine.



IMPORTANT: READ THE OPERATOR'S MANUAL THOROUGHLY AND FOLLOW THE SAFE OPERATION PRACTICES WHILE OPERATING THE UNIT.

